

## Product datasheet for **TA321034**

### EDF1 Goat Polyclonal Antibody

#### Product data:

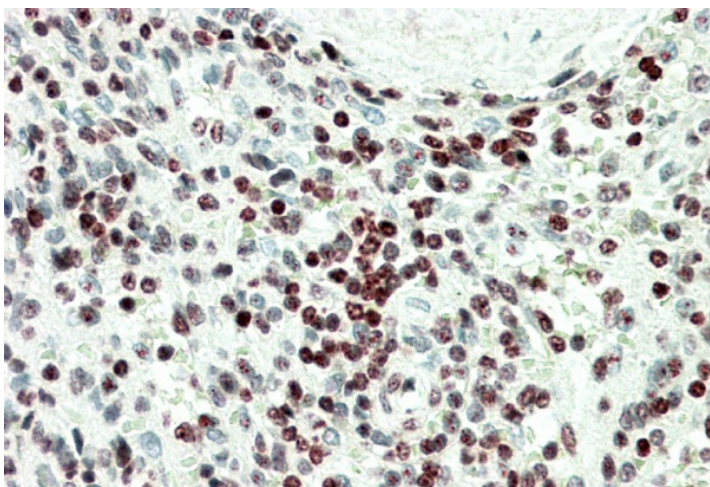
Product Type:	Primary Antibodies
Applications:	IHC, WB
Recommended Dilution:	WB: 0.3-1ug/mL; IHC: 5-10ug/mL
Reactivity:	Human (Expected from sequence similarity: Mouse, Rat, Pig)
Host:	Goat
Clonality:	Polyclonal
Immunogen:	internal region of NP_003783.1; NP_694880.1 (NKQHSITKNTAKLDR)
Formulation:	Supplied at 0.5 mg/ml in Tris saline, 0.02% sodium azide, pH7.3 with 0.5% bovine serum albumin.
Concentration:	lot specific
Purification:	Purified from goat serum by ammonium sulphate precipitation followed by antigen affinity chromatography using the immunizing peptide.
Conjugation:	Unconjugated
Storage:	Store at -20°C as received.
Stability:	Stable for 12 months from date of receipt.
Gene Name:	endothelial differentiation related factor 1
Database Link:	<a href="#">NP_003783</a> <a href="#">Entrez Gene 59022 Mouse</a> <a href="#">Entrez Gene 296570 Rat</a> <a href="#">Entrez Gene 8721 Human</a> <a href="#">O60869</a>
Background:	This gene encodes a protein that may regulate endothelial cell differentiation, lipid metabolism, and hormone-induced cardiomyocyte hypertrophy. The encoded protein has also been found to act as a transcriptional coactivator by interconnecting the general transcription factor TATA element-binding protein (TBP) and gene-specific activators. Alternate splicing results in multiple transcript variants. [provided by RefSeq, Jul 2013]
Synonyms:	CFAP280; EDF-1; MBF1
Note:	This antibody is expected to recognize both reported isoforms (NP_003783.1; NP_694880.1).
Protein Families:	Druggable Genome, Transcription Factors



[View online »](#)

**Product images:**

EDF1 antibody (0.3ug/ml) staining of A549 lysate (35ug protein in RIPA buffer). Primary incubation was 1 hour. Detected by chemiluminescence.



TA321034 (5ug/ml) staining of paraffin embedded Human Spleen. Steamed antigen retrieval with citrate buffer pH 6, AP-staining.