

## Product datasheet for **TA321030**

### ENPP2 Goat Polyclonal Antibody

#### Product data:

Product Type:	Primary Antibodies
Applications:	WB
Recommended Dilution:	WB: 0.3-1 µg/ml
Reactivity:	Human
Host:	Goat
Clonality:	Polyclonal
Immunogen:	internal region of NP_006200.3; NP_001035181.1, NP_001124335.1 (PDHLTSCVRPDVRS)
Formulation:	Supplied at 0.5 mg/ml in Tris saline, 0.02% sodium azide, pH7.3 with 0.5% bovine serum albumin.
Concentration:	lot specific
Purification:	Purified from goat serum by ammonium sulphate precipitation followed by antigen affinity chromatography using the immunizing peptide.
Conjugation:	Unconjugated
Storage:	Store at -20°C as received.
Stability:	Stable for 12 months from date of receipt.
Gene Name:	ectonucleotide pyrophosphatase/phosphodiesterase 2
Database Link:	<a href="#">NP_001035181</a> <a href="#">Entrez Gene 5168 Human</a> <a href="#">Q13822</a>
Background:	The protein encoded by this gene functions as both a phosphodiesterase, which cleaves phosphodiester bonds at the 5' end of oligonucleotides, and a phospholipase, which catalyzes production of lysophosphatidic acid (LPA) in extracellular fluids. LPA evokes growth factor-like responses including stimulation of cell proliferation and chemotaxis. This gene product stimulates the motility of tumor cells and has angiogenic properties, and its expression is upregulated in several kinds of carcinomas. The gene product is secreted and further processed to make the biologically active form. Several alternatively spliced transcript variants encoding different isoforms have been identified. [provided by RefSeq, Aug 2008]
Synonyms:	ATX; ATX-X; AUTOTAXIN; LysoPLD; NPP2; PD-IALPHA; PDNP2



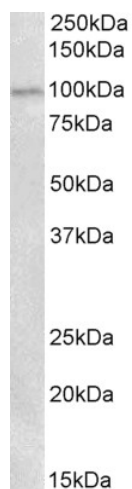
[View online »](#)

**Note:** This antibody is expected to recognize all reported isoforms (NP\_006200.3; NP\_001035181.1, NP\_001124335.1).

**Protein Families:** Druggable Genome, Transcription Factors, Transmembrane

**Protein Pathways:** Ether lipid metabolism

**Product images:**



ENPP2 antibody (0.3ug/ml) staining of Human Placenta lysate (35ug protein in RIPA buffer). Primary incubation was 1 hour. Detected by chemiluminescence.