

Product datasheet for **TA321024**

SYVN1 Goat Polyclonal Antibody

Product data:

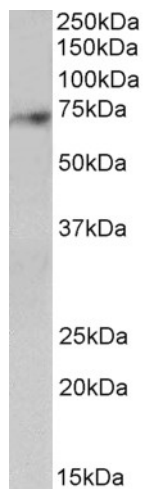
Product Type:	Primary Antibodies
Applications:	WB
Recommended Dilution:	WB: 1-3µg/ml
Reactivity:	Human (Expected from sequence similarity: Rat, Dog)
Host:	Goat
Clonality:	Polyclonal
Immunogen:	internal region of NP_115807.1; NP_757385.1 (HERQHLEARLQS)
Formulation:	Supplied at 0.5 mg/ml in Tris saline, 0.02% sodium azide, pH7.3 with 0.5% bovine serum albumin.
Concentration:	lot specific
Purification:	Purified from goat serum by ammonium sulphate precipitation followed by antigen affinity chromatography using the immunizing peptide.
Conjugation:	Unconjugated
Storage:	Store at -20°C as received.
Stability:	Stable for 12 months from date of receipt.
Gene Name:	synoviolin 1
Database Link:	NP_757385 Entrez Gene 361712 Rat Entrez Gene 483746 Dog Entrez Gene 84447 Human Q86TM6
Background:	This gene encodes a protein involved in endoplasmic reticulum (ER)-associated degradation. The encoded protein removes unfolded proteins, accumulated during ER stress, by retrograde transport to the cytosol from the ER. This protein also uses the ubiquitin-proteasome system for additional degradation of unfolded proteins. Sequence analysis identified two transcript variants that encode different isoforms. [provided by RefSeq, May 2011]
Synonyms:	DER3; HRD1
Note:	This antibody is expected to recognize isoforms a and b (NP_115807.1; NP_757385.1).
Protein Families:	Druggable Genome, Transmembrane



[View online »](#)

Protein Pathways: Ubiquitin mediated proteolysis

Product images:



SYVN1 antibody (2ug/ml) staining of Human Cerebellum lysate (35ug protein in RIPA buffer). Primary incubation was 1 hour. Detected by chemiluminescence.