

## Product datasheet for **TA321023**

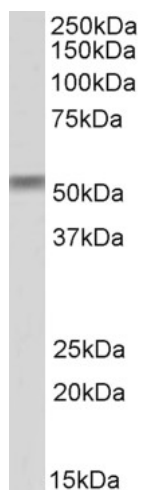
### CREB3L2 Goat Polyclonal Antibody

#### Product data:

Product Type:	Primary Antibodies
Applications:	WB
Recommended Dilution:	WB: 1-3µg/ml
Reactivity:	Mouse, Rat (Expected from sequence similarity: Human, Dog, Cow)
Host:	Goat
Clonality:	Polyclonal
Immunogen:	internal region of NP_919047.2 (HSLQEPYTASVVRS)
Formulation:	Supplied at 0.5 mg/ml in Tris saline, 0.02% sodium azide, pH7.3 with 0.5% bovine serum albumin.
Concentration:	lot specific
Purification:	Purified from goat serum by ammonium sulphate precipitation followed by antigen affinity chromatography using the immunizing peptide.
Conjugation:	Unconjugated
Storage:	Store at -20°C as received.
Stability:	Stable for 12 months from date of receipt.
Gene Name:	cAMP responsive element binding protein 3-like 2
Database Link:	<a href="#">NP_919047</a> <a href="#">Entrez Gene 208647 Mouse</a> <a href="#">Entrez Gene 362339 Rat</a> <a href="#">Entrez Gene 491369 Dog</a> <a href="#">Entrez Gene 64764 Human</a> <a href="#">Q70SY1</a>
Background:	This gene encodes a member of the oasis bZIP transcription factor family. Members of this family can dimerize but form homodimers only. The encoded protein is a transcriptional activator. Translocations between this gene on chromosome 7 and the gene fused in sarcoma on chromosome 16 can be found in some tumors. Multiple transcript variants encoding different isoforms have been found for this gene. [provided by RefSeq, Dec 2011]
Synonyms:	BBF2H7
Protein Families:	Transcription Factors
Protein Pathways:	Huntington's disease, Melanogenesis, Prostate cancer



[View online »](#)

**Product images:**

CREB3L2 antibody (1ug/ml) staining of Rat Testis lysate (35ug protein in RIPA buffer). Primary incubation was 1 hour. Detected by chemiluminescence.