

Product datasheet for **TA321022**

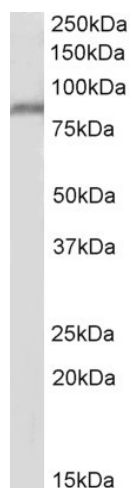
PPIG Goat Polyclonal Antibody

Product data:

Product Type:	Primary Antibodies
Applications:	WB
Recommended Dilution:	WB: 1-3µg/ml
Reactivity:	Human (Expected from sequence similarity: Mouse, Rat, Dog, Cow)
Host:	Goat
Clonality:	Polyclonal
Immunogen:	internal region of NP_004783.2 (RDHNSSNNSREKKAD)
Formulation:	Supplied at 0.5 mg/ml in Tris saline, 0.02% sodium azide, pH7.3 with 0.5% bovine serum albumin.
Concentration:	lot specific
Purification:	Purified from goat serum by ammonium sulphate precipitation followed by antigen affinity chromatography using the immunizing peptide.
Conjugation:	Unconjugated
Storage:	Store at -20°C as received.
Stability:	Stable for 12 months from date of receipt.
Gene Name:	peptidylprolyl isomerase G
Database Link:	NP_004783 Entrez Gene 83624 RatEntrez Gene 228005 MouseEntrez Gene 607519 DogEntrez Gene 9360 Human Q13427
Synonyms:	CARS-Cyp; CYP; SCAF10; SRCyp



[View online »](#)

Product images:

PPIG antibody (2ug/ml) staining of Human Kidney lysate (35ug protein in RIPA buffer). Primary incubation was 1 hour. Detected by chemiluminescence.