

Product datasheet for **TA321019**

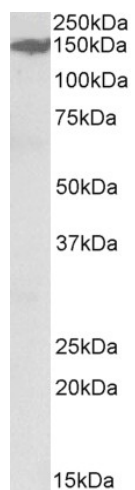
MAST3 Goat Polyclonal Antibody

Product data:

| | |
|-----------------------|---|
| Product Type: | Primary Antibodies |
| Applications: | WB |
| Recommended Dilution: | WB: 0.3-1 µg/ml |
| Reactivity: | Rat (Expected from sequence similarity: Human, Mouse, Dog, Cow) |
| Host: | Goat |
| Clonality: | Polyclonal |
| Immunogen: | internal region (near C-terminus) of NP_055831.1 (DSFKKQEAVQEVS) |
| Formulation: | Supplied at 0.5 mg/ml in Tris saline, 0.02% sodium azide, pH7.3 with 0.5% bovine serum albumin. |
| Concentration: | lot specific |
| Purification: | Purified from goat serum by ammonium sulphate precipitation followed by antigen affinity chromatography using the immunizing peptide. |
| Conjugation: | Unconjugated |
| Storage: | Store at -20°C as received. |
| Stability: | Stable for 12 months from date of receipt. |
| Gene Name: | microtubule associated serine/threonine kinase 3 |
| Database Link: | NP_055831 Entrez Gene 546071 Mouse Entrez Gene 688540 Rat Entrez Gene 476670 Dog Entrez Gene 23031 Human O60307 |
| Synonyms: | KIAA0561 |
| Protein Families: | Druggable Genome, Protein Kinase |



[View online »](#)

Product images:

MAST3 antibody (0.3ug/ml) staining of Rat Kidney lysate (35ug protein in RIPA buffer). Primary incubation was 1 hour. Detected by chemiluminescence.