

Product datasheet for **TA321018**

ATG4C Goat Polyclonal Antibody

Product data:

Product Type:	Primary Antibodies
Applications:	WB
Recommended Dilution:	WB: 2-6µg/ml
Reactivity:	Human (Expected from sequence similarity: Dog, Cow)
Host:	Goat
Clonality:	Polyclonal
Immunogen:	C- terminus of NP_116241.2; NP_835739.1 (EDEKKQLKRFSTEE)
Formulation:	Supplied at 0.5 mg/ml in Tris saline, 0.02% sodium azide, pH7.3 with 0.5% bovine serum albumin.
Concentration:	lot specific
Purification:	Purified from goat serum by ammonium sulphate precipitation followed by antigen affinity chromatography using the immunizing peptide.
Conjugation:	Unconjugated
Storage:	Store at -20°C as received.
Stability:	Stable for 12 months from date of receipt.
Gene Name:	autophagy related 4C cysteine peptidase
Database Link:	NP_116241 Entrez Gene 489561 Dog Entrez Gene 84938 Human Q96DT6
Background:	Autophagy is the process by which endogenous proteins and damaged organelles are destroyed intracellularly. Autophagy is postulated to be essential for cell homeostasis and cell remodeling during differentiation, metamorphosis, non-apoptotic cell death, and aging. Reduced levels of autophagy have been described in some malignant tumors, and a role for autophagy in controlling the unregulated cell growth linked to cancer has been proposed. This gene encodes a member of the autophagin protein family. The encoded protein is also designated as a member of the C-54 family of cysteine proteases. Alternate transcriptional splice variants, encoding the same protein, have been characterized. [provided by RefSeq, Jul 2008]



[View online »](#)

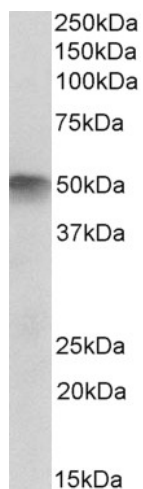
Synonyms: APG4-C; APG4C; AUTL1; AUTL3

Note: Reported variants represent identical protein: NP_116241.2, NP_835739.1

Protein Families: Protease

Protein Pathways: Regulation of autophagy

Product images:



ATG4C antibody (2ug/ml) staining of Human Skeletal Muscle lysate (35ug protein in RIPA buffer). Primary incubation was 1 hour. Detected by chemiluminescence.