

Product datasheet for **TA321016**

TORC2 (CRTC2) Goat Polyclonal Antibody

Product data:

Product Type:	Primary Antibodies
Applications:	WB
Recommended Dilution:	WB: 2-6µg/ml
Reactivity:	Human (Expected from sequence similarity: Mouse, Rat, Dog)
Host:	Goat
Clonality:	Polyclonal
Immunogen:	internal region of NP_083157.1 (QDPHVLNHQNLTHC)
Formulation:	Supplied at 0.5 mg/ml in Tris saline, 0.02% sodium azide, pH7.3 with 0.5% bovine serum albumin.
Concentration:	lot specific
Purification:	Purified from goat serum by ammonium sulphate precipitation followed by antigen affinity chromatography using the immunizing peptide.
Conjugation:	Unconjugated
Storage:	Store at -20°C as received.
Stability:	Stable for 12 months from date of receipt.
Gene Name:	CREB regulated transcription coactivator 2
Database Link:	NP_859066 Entrez Gene 74343 Mouse Entrez Gene 310615 Rat Entrez Gene 612305 Dog Entrez Gene 200186 Human Q53ET0



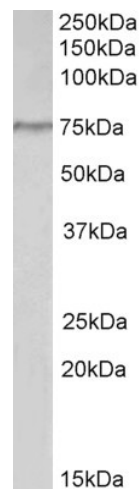
[View online »](#)

Background:

This gene encodes a member of the transducers of regulated cAMP response element-binding protein activity family of transcription coactivators. These proteins promote the transcription of genes targeted by the cAMP response element-binding protein, and therefore play an important role in many cellular processes. Under basal conditions the encoded protein is phosphorylated by AMP-activated protein kinase or the salt-inducible kinases and is sequestered in the cytoplasm. Upon activation by elevated cAMP or calcium, the encoded protein translocates to the nucleus and increases target gene expression. Single nucleotide polymorphisms in this gene may increase the risk of type 2 diabetes. A pseudogene of this gene is located on the long arm of chromosome 5. [provided by RefSeq, Dec 2010]

Synonyms:

TORC-2; TORC2

Product images:


CRTC2 antibody (2ug/ml) staining of Hela lysate (35ug protein in RIPA buffer). Primary incubation was 1 hour. Detected by chemiluminescence.