

Product datasheet for **TA320481**

TLR2 Mouse Monoclonal Antibody [Clone ID: TL2.3]

Product data:

Product Type:	Primary Antibodies
Clone Name:	TL2.3
Applications:	FC
Recommended Dilution:	Flow, IHC
Reactivity:	Human
Host:	Mouse
Clonality:	Monoclonal
Formulation:	Aqueous buffer, 0.09% sodium azide, may contain carrier protein/stabilizer
Concentration:	lot specific
Purification:	Affinity purified
Conjugation:	Unconjugated
Storage:	Store at -20°C as received.
Stability:	Stable for 12 months from date of receipt.
Gene Name:	toll like receptor 2
Database Link:	NP_003255 Entrez Gene 7097 Human O60603



[View online »](#)

Background:

The TL2.3 monoclonal antibody reacts with human Toll-like receptor 2 (TLR2). To date, at least twelve members of the Toll family have been identified in human. This family of type I transmembrane proteins is characterized by an extracellular domain with leucine-rich repeats and a cytoplasmic domain with homology to the type I IL-1 receptor. Two of these receptors, TLR2 and TLR4, are pattern recognition receptors and signaling molecules in response to bacterial lipoproteins and have been implicated in innate immunity and inflammation. TLR2 is expressed by peripheral blood monocytes and is responsible for distinguishing different pathogens. TL2.1 and TL2.3, reported as blocking antibodies, have been used to study the role of TLR2 as a pattern recognition receptor in microbial lipoprotein/lipopeptide induced cytokine production from human peripheral blood mononuclear cells. TL2.3 has been reported to recognize a different epitope than TL2.1 and to work better for detection of TLR2 by immunohistochemistry. TL2.1 and its directly fluorochrome conjugates are more efficient for detection of human TLR2 by flow cytometric analysis.

Synonyms:

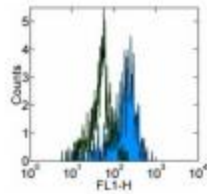
CD282; TIL4

Protein Families:

Druggable Genome, Transmembrane

Protein Pathways:

Toll-like receptor signaling pathway

Product images:

Staining of normal human peripheral blood cells with 0.5 ug of Mouse IgG2a K Isotype Control Purified (open histogram) or 1.0 ug of Anti-Human CD282 (TLR2) Purified (filled histogram) followed by Anti-Mouse IgG FITC. Cells in the monocyte gate were used for analysis.