

Product datasheet for **TA320479**

TLR2 Mouse Monoclonal Antibody [Clone ID: T2.5]

Product data:

Product Type:	Primary Antibodies
Clone Name:	T2.5
Applications:	FC
Recommended Dilution:	Flow, IHC, Functional Assay, IP
Reactivity:	Human, Mouse
Host:	Mouse
Clonality:	Monoclonal
Formulation:	Aqueous buffer, 0.09% sodium azide, may contain carrier protein/stabilizer
Concentration:	lot specific
Purification:	Affinity purified
Conjugation:	Unconjugated
Storage:	Store at -20°C as received.
Stability:	Stable for 12 months from date of receipt.
Gene Name:	toll like receptor 2
Database Link:	NP_003255 Entrez Gene 24088 Mouse Entrez Gene 7097 Human O60603

Background: The T2.5 monoclonal antibody reacts with mouse and human Toll-like receptor 2 (TLR2). Mouse TLR2 is expressed by the myeloid lineage, including macrophage and dendritic cells in splenocytes and the RAW264.7 cell line. To date, at least twelve members of the Toll family have been identified in human and mouse. This family of type I transmembrane proteins is characterized by an extracellular domain with leucine-rich repeats and a cytoplasmic domain with homology to the type I IL-1 receptor. Two of these receptors, TLR2 and TLR4, are pattern recognition receptors and signaling molecules in response to bacterial lipoproteins and have been implicated in innate immunity and inflammation. TLR2 is expressed on the surface of cells and is responsible for distinguishing different pathogens. T2.5 is an antagonistic antibody.

Synonyms: CD282; TIL4

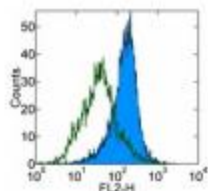


[View online »](#)

Protein Families: Druggable Genome, Transmembrane

Protein Pathways: Toll-like receptor signaling pathway

Product images:



Staining of RAW264.7 cells with 0.25 ug Purified Mouse IgG Isotype Control (open histogram) or 0.25 ug Anti-Human/Mouse CD282 (TLR2) Purified (filled histogram) followed by Anti-Mouse IgG Biotin and Streptavidin PE. Total viable cells were used for analysis.