

Product datasheet for **TA320477**

TLR1 Mouse Monoclonal Antibody [Clone ID: GD2.F4]

Product data:

Product Type:	Primary Antibodies
Clone Name:	GD2.F4
Applications:	FC
Recommended Dilution:	Flow, IHC
Reactivity:	Human
Host:	Mouse
Clonality:	Monoclonal
Formulation:	Aqueous buffer, 0.09% sodium azide, may contain carrier protein/stabilizer
Concentration:	lot specific
Purification:	Affinity purified
Conjugation:	Unconjugated
Storage:	Store at -20°C as received.
Stability:	Stable for 12 months from date of receipt.
Gene Name:	toll like receptor 1
Database Link:	NP_003254 Entrez Gene 7096 Human Q15399



[View online »](#)

Background:

The GD2.F4 antibody reacts with human Toll-like receptor 1 (TLR1). TLR1 is expressed in low numbers on the surface of peripheral blood monocytes and even lower numbers on dendritic cells. A very high degree of donor variability has been reported for TLR1 expression. eBioscience manufactured GD2.F4 mAb has been tested by flow cytometry, in parallel with a sample from the developer using cells from healthy donors. eBioscience and the reference antibody gave similar results: donors tested confirmed low levels expression of TLR1 on PBMC (less than 1/4 log shift). While the ligand and exact function of TLR1 are not defined yet, it has been suggested that TLR1 may cooperate with TLR2 in response to certain antagonists. Despite low levels of surface expression as detected by flow cytometric analysis, TLRs are efficient signal transducing molecules in monocytes and dendritic cells. To date, at least ten members of the Toll family have been identified in human. This family of type I transmembrane proteins is characterized by an extracellular domain with leucine-rich repeats and a cytoplasmic domain with homology to the type I IL-1 receptor. Two of these receptors, TLR2 and TLR4, are pattern recognition receptors and signaling molecules in response to bacterial lipoproteins and have been implicated in innate immunity and inflammation.

Synonyms:

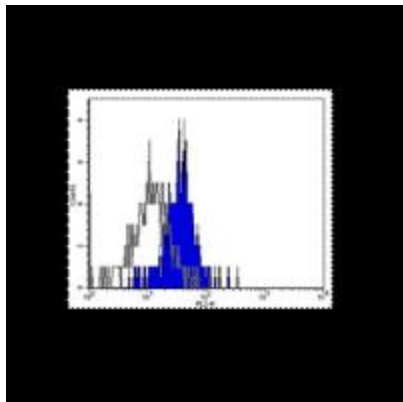
CD281; rsc786; TIL; TIL. LPRS5

Protein Families:

Druggable Genome, Transmembrane

Protein Pathways:

Toll-like receptor signaling pathway

Product images:

Staining of normal human peripheral blood cells with Anti-Human CD281 (TLR1) Purified vs. Purified Mouse IgG1 Isotype Control. Cell in the monocyte gate were used for analysis.