

Product datasheet for **TA320459**

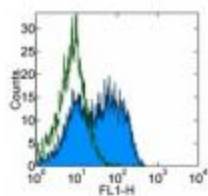
Sell Rat Monoclonal Antibody [Clone ID: MEL-14]

Product data:

Product Type:	Primary Antibodies
Clone Name:	MEL-14
Applications:	FC
Recommended Dilution:	Flow, IHC, Functional Assay, IP
Reactivity:	Mouse
Host:	Rat
Clonality:	Monoclonal
Formulation:	Aqueous buffer, 0.09% sodium azide, may contain carrier protein/stabilizer
Concentration:	lot specific
Purification:	Affinity purified
Conjugation:	Unconjugated
Storage:	Store at -20°C as received.
Stability:	Stable for 12 months from date of receipt.
Gene Name:	selectin, lymphocyte
Database Link:	NP_035476 Entrez Gene 20343 Mouse P18337
Background:	The MEL-14 monoclonal antibody reacts with mouse CD62L, a 76 kDa member of the selectin family. CD62L is expressed by neutrophils, monocytes, and subsets of T, B, and NK cells and binds a number of glycosylated, fucosylated, sulfated sialylated glycoproteins including CD34, glycam-1 and MAdCam-1. These interactions mediate rolling of lymphocytes on activated endothelium at the sites of inflammation and homing of cells to the high endothelial venules (HEV) of peripheral lymphoid tissues.
Synonyms:	CD62L; gp90-MEL; hLHRc; LAM-1; LAM1; LECAM1; Leu-8; LEU8; LNHR; LSEL; Lyam-1; LYAM1; PLNHR; TQ1



[View online »](#)

Product images:

Staining of BALB/c splenocytes with 0.25 ug of Rat IgG2a kappa Isotype Control Purified (open histogram) or 0.25 ug of Anti-Mouse CD62L (L-Selectin) Purified (filled histogram) followed by Anti-Rat IgG FITC. Cells in the lymphocyte gate were used for analysis.