

Product datasheet for **TA320458**

CD62L (SELL) Mouse Monoclonal Antibody [Clone ID: DREG-56 (DREG56)]

Product data:

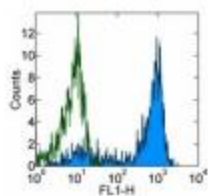
Product Type:	Primary Antibodies
Clone Name:	DREG-56 (DREG56)
Applications:	FC
Recommended Dilution:	Flow, IHC, Functional Assay, WB
Reactivity:	Human
Host:	Mouse
Clonality:	Monoclonal
Formulation:	Aqueous buffer, 0.09% sodium azide, may contain carrier protein/stabilizer
Concentration:	lot specific
Purification:	Affinity purified
Conjugation:	Unconjugated
Storage:	Store at -20°C as received.
Stability:	Stable for 12 months from date of receipt.
Gene Name:	selectin L
Database Link:	NP_000646 Entrez Gene 6402 Human P14151

Background: The DREG-56 monoclonal antibody reacts with human CD62L, a 76 kDa member of the selectin family. CD62L is expressed by neutrophils, monocytes, and subsets of T, B, and NK cells and binds a number of glycosylated, fucosylated, sulfated sialylated glycoproteins including CD34, glycam-1 and MAdCAM-1. These interactions mediate rolling of lymphocytes on activated endothelium at the sites of inflammation and homing of cells to the high endothelial venules (HEV) of peripheral lymphoid tissues.

Synonyms: CD62L; LAM1; LECAM1; LEU8; LNHR; LSEL; LYAM1; PLNHR; TQ1
Protein Families: Druggable Genome, ES Cell Differentiation/IPS, Transmembrane
Protein Pathways: Cell adhesion molecules (CAMs)



[View online »](#)

Product images:

Staining of normal human peripheral blood cells with 0.5 ug of Mouse IgG1 kappa Isotype Control Purified (open histogram) or 0.5 ug of Anti-Human CD62P (P-Selectin) Purified (filled histogram) followed by Anti-Mouse IgG FITC. Cells in the lymphocyte gate were used for analysis.