

Product datasheet for **TA320457**

CD62E (SELE) Mouse Monoclonal Antibody [Clone ID: P2H3]

Product data:

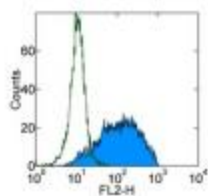
Product Type:	Primary Antibodies
Clone Name:	P2H3
Applications:	FC
Recommended Dilution:	Flow, IHC, Functional Assay, IP
Reactivity:	Human
Host:	Mouse
Clonality:	Monoclonal
Formulation:	Aqueous buffer, 0.09% sodium azide, may contain carrier protein/stabilizer
Concentration:	lot specific
Purification:	Affinity purified
Conjugation:	Unconjugated
Storage:	Store at -20°C as received.
Stability:	Stable for 12 months from date of receipt.
Gene Name:	selectin E
Database Link:	NP_000441 Entrez Gene 6401 Human P16581

Background: The P2H3 monoclonal antibody reacts with human CD62E, a 97-115 kDa member of the selectin family. CD62E, also known as E-selectin or endothelial-leukocyte adhesion molecule-1 (ELAM-1) is an adhesion molecule expressed by endothelial cells upon stimulation with cytokines including TNF α and IL-1 β . Induced expression of CD62E during inflammatory conditions is thought to mediate leukocyte rolling including the initial interaction of neutrophils with endothelium. The P2H3 monoclonal antibody also inhibits cellular adhesion to cytokine-activated endothelial cells.

Synonyms:	CD62E; ELAM; ELAM1; ESEL; LECAM2
Protein Families:	Druggable Genome, Transmembrane
Protein Pathways:	Cell adhesion molecules (CAMs)



[View online »](#)

Product images:

Staining of TNF alpha-stimulated Human Umbilical Vein Endothelial Cells (HUVEC) with 0.5 ug of Mouse IgG1 kappa Isotype Control Purified (open histogram) or 0.5 ug of Anti-Human CD62E (E-Selectin) Purified (filled histogram) followed by F(ab')₂ Anti-Mouse IgG PE. Total viable cells were used for analysis.