

## Product datasheet for TA320440

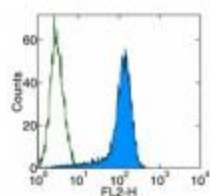
### Pdcd1Ig2 Rat Monoclonal Antibody [Clone ID: TY25]

#### Product data:

Product Type:	Primary Antibodies
Clone Name:	TY25
Applications:	FC
Recommended Dilution:	Flow, IHC, Functional Assay, IP, WB
Reactivity:	Mouse
Host:	Rat
Clonality:	Monoclonal
Formulation:	Aqueous buffer, 0.09% sodium azide, may contain carrier protein/stabilizer
Concentration:	lot specific
Purification:	Affinity purified
Conjugation:	Unconjugated
Storage:	Store at -20°C as received.
Stability:	Stable for 12 months from date of receipt.
Gene Name:	programmed cell death 1 ligand 2
Database Link:	<a href="#">NP_067371</a> <a href="#">Entrez Gene 58205 Mouse</a> <a href="#">Q9WUL5</a>
Background:	The TY25 monoclonal antibody reacts with mouse B7-DC/PD-L2. B7-DC, a member of the B7 family, has a predicted molecular weight of ~25 kDa and belongs to the Ig superfamily. The mouse B7-DC has a short cytoplasmic tail (4aa). B7-DC is primarily expressed by sub-populations of dendritic cells, monocytes and macrophages. Although B7-DC has structural and sequence similarities to the B7 family, it does not bind CD28/CTLA-4, but binds PD-1. The interactions between PD-1 and B7-DC/PD-L2 have been reported to be involved in costimulation or suppression of T cell proliferation depending on state of cellular activation. TY25 is a useful tool to study the exact function of B7-DC/PD-L2 in APC/T cell interaction and to characterize the expression pattern of this molecule in mouse.
Synonyms:	B7-DC; B7DC; bA574F11.2; Btdc; CD273; MGC142238; MGC142240; PD-L2; PDCD1L2; PDL2



[View online »](#)

**Product images:**

Staining of B7-DC transfected cells with Anti-Mouse CD273 (B7-DC) PE. Appropriate isotype controls were used (open histogram). Total viable cells were used for analysis.