

Product datasheet for **TA320423**

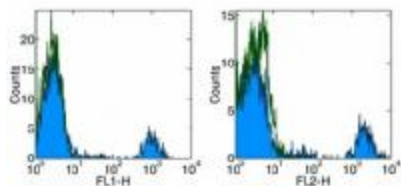
CD20 (MS4A1) Mouse Monoclonal Antibody [Clone ID: 2H7]

Product data:

Product Type:	Primary Antibodies
Clone Name:	2H7
Applications:	FC
Recommended Dilution:	Flow, IHC
Reactivity:	Human
Host:	Mouse
Clonality:	Monoclonal
Formulation:	Aqueous buffer, 0.09% sodium azide, may contain carrier protein/stabilizer
Concentration:	lot specific
Purification:	Affinity purified
Conjugation:	Unconjugated
Storage:	Store at -20°C as received.
Stability:	Stable for 12 months from date of receipt.
Gene Name:	membrane spanning 4-domains A1
Database Link:	NP_068769 Entrez Gene 931 Human P11836
Background:	The 2H7 monoclonal antibody reacts with human CD20, a 33-36 kDa transmembrane protein. CD20 is expressed by developing B cells as well as mature B cells but not plasma cells. CD20 has been detected at low levels on a small subset of mature T cells. It is suggested that CD20 plays a role in B-cell activation.
Synonyms:	B1; Bp35; CD20; CVID5; LEU-16; MS4A2; S7
Protein Families:	Druggable Genome, Transmembrane
Protein Pathways:	Hematopoietic cell lineage



[View online »](#)

Product images:

Staining of normal human peripheral blood cells with Anti-Human CD20 FITC (left) and PE (right). Appropriate isotype controls were used (open histogram). Cells in the lymphocyte population were used for analysis.