

Product datasheet for **TA320421**

CD146 (MCAM) Mouse Monoclonal Antibody [Clone ID: P1H12]

Product data:

Product Type:	Primary Antibodies
Clone Name:	P1H12
Applications:	FC
Recommended Dilution:	Flow, IHC, IP, WB
Reactivity:	Canine, Human, Mouse, Rabbit
Host:	Mouse
Clonality:	Monoclonal
Formulation:	Aqueous buffer, 0.09% sodium azide, may contain carrier protein/stabilizer
Concentration:	lot specific
Purification:	Affinity purified
Conjugation:	Unconjugated
Storage:	Store at -20°C as received.
Stability:	Stable for 12 months from date of receipt.
Gene Name:	melanoma cell adhesion molecule
Database Link:	NP_006491 Entrez Gene 84004 Mouse Entrez Gene 4162 Human P43121

Background: The monoclonal antibody P1H12 recognizes CD146 also known as MUC18, s-endo, Endo-CAM and Mel-CAM, which is a member of the Ig superfamily of proteins. The expression of CD146 is found on endothelial cells, bone marrow fibroblasts and some tumors (especially melanoma). Recently mesenchymal stromal cells and endometrial stromal cells have also been shown to express CD146. The presence of CD146 on circulating blood cells have been confined to a subset of T cells rather than circulating endothelial cells, as expression of other endothelial markers (CD31 and CD51/61) is negative. Expression can be found on activated lymphocytes. The protein is heavily glycosylated with more than 50% of the mass from carbohydrates. The antibody P1H12 has been reported to crossreact to mouse, rabbit, canine, but not rat.

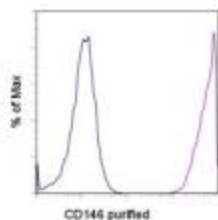
Synonyms: CD146; MUC18



[View online »](#)

Protein Families: Druggable Genome, ES Cell Differentiation/IPS, Transmembrane

Product images:



Staining of Human Umbilical Vein Endothelial Cells (HUVEC) with 0.125 ug of Mouse IgG1 K Isotype Control Purified (blue histogram) or 0.125 ug of Anti-CD146 Purified (purple histogram) followed by F(ab')₂ Anti-Mouse IgG PE. Total viable cells were used for analysis.