

## Product datasheet for **TA320399**

### Integrin beta 7 (ITGB7) Rat Monoclonal Antibody [Clone ID: FIB504]

#### Product data:

Product Type:	Primary Antibodies
Clone Name:	FIB504
Applications:	FC
Recommended Dilution:	Flow, Functional Assay
Reactivity:	Human, Mouse
Host:	Rat
Clonality:	Monoclonal
Formulation:	Aqueous buffer, 0.09% sodium azide, may contain carrier protein/stabilizer
Concentration:	lot specific
Purification:	Affinity purified
Conjugation:	Unconjugated
Storage:	Store at -20°C as received.
Stability:	Stable for 12 months from date of receipt.
Gene Name:	integrin subunit beta 7
Database Link:	<a href="#">NP_000880</a> <a href="#">Entrez Gene 16421 Mouse</a> <a href="#">Entrez Gene 3695 Human</a> <a href="#">P26010</a>

**Background:** The FIB504 monoclonal antibody reacts with human and mouse integrin beta 7. Integrin beta 7 is a 130 kD glycoprotein which associates with integrin alpha 4 (CD49d) to form the alpha 4 beta 7 integrin LPAM-1, expressed on intraepithelial lymphocytes. It also associates with alpha E (CD103) to form the alpha E beta 7 integrin HML-1, expressed on T cells adjacent to mucosal epithelium and intraepithelial lymphocytes. Main ligands for integrin alpha 4 beta 7 include VCAM-1 (CD106), MAdCAM-1 and fibronectin, while the main ligand of integrin alpha E beta 7 is E-cadherin (CD324). Integrin beta 7 plays an important role in the adhesion of leukocytes to endothelial cells promoting the transmigration of leukocytes to extravascular spaces during the inflammatory response. The FIB504 antibody has been reported to have blocking activity.

**Synonyms:** beta 7; integrin; integrin beta 7 subunit

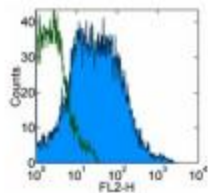


[View online »](#)

**Protein Families:** Druggable Genome, Transmembrane

**Protein Pathways:** Arrhythmogenic right ventricular cardiomyopathy (ARVC), Cell adhesion molecules (CAMs), Dilated cardiomyopathy, ECM-receptor interaction, Focal adhesion, Hypertrophic cardiomyopathy (HCM), Regulation of actin cytoskeleton

### Product images:



Staining of normal human peripheral blood cells with 0.06 ug of Rat IgG2a kappa Isotype Control Purified (open histogram) or 0.06 ug of Anti-Human/Mouse Integrin ?7 Purified (filled histogram) followed by F(ab')<sub>2</sub> Anti-Rat IgG PE. Cells in the lymphocyte gate were used for analysis.