

## Product datasheet for **TA320395**

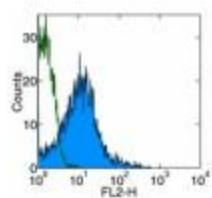
### **Itgb2 Rat Monoclonal Antibody [Clone ID: M18/2]**

#### **Product data:**

<b>Product Type:</b>	Primary Antibodies
<b>Clone Name:</b>	M18/2
<b>Applications:</b>	FC
<b>Recommended Dilution:</b>	Flow, IHC, Functional Assay, IP, WB
<b>Reactivity:</b>	Mouse
<b>Host:</b>	Rat
<b>Clonality:</b>	Monoclonal
<b>Formulation:</b>	Aqueous buffer, 0.09% sodium azide, may contain carrier protein/stabilizer
<b>Concentration:</b>	lot specific
<b>Purification:</b>	Affinity purified
<b>Conjugation:</b>	Unconjugated
<b>Storage:</b>	Store at -20°C as received.
<b>Stability:</b>	Stable for 12 months from date of receipt.
<b>Gene Name:</b>	integrin beta 2
<b>Database Link:</b>	<a href="#">NP_032430</a> <a href="#">Entrez Gene 16414 Mouse P11835</a>
<b>Background:</b>	The M18/2 monoclonal antibody reacts with mouse CD18, the 90-95 kDa integrin beta 2 glycoprotein. CD18 is the common $\beta$ subunit that non-covalently associates with CD11a (alpha L), CD11b (alpha M) and CD11c (alpha X) to form LFA-1, Mac-1 and gp150/95. Heterodimers of CD18 and the $\alpha$ subunits are expressed broadly by all leukocytes with NK and T cells showing higher density of surface expression. Through the interactions of LFA-1, Mac-1 and gp150/95 with their counter-receptors, CD18 is involved in cellular adhesion and the immune response.
<b>Synonyms:</b>	CD18; LAD; LCAMB; LFA-1; MAC-1; MF17; MFI7; OTTHUMP00000115279; OTTHUMP00000115281; OTTHUMP00000115282



[View online »](#)

**Product images:**

Staining of mouse splenocytes with Anti-Mouse CD18 PE. Autofluorescence is shown via open histogram. Total viable cells were used for analysis.