

Product datasheet for **TA320393**

Itgb1 Rat Monoclonal Antibody [Clone ID: KMI6]

Product data:

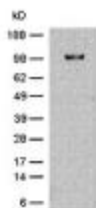
Product Type:	Primary Antibodies
Clone Name:	KMI6
Applications:	WB
Recommended Dilution:	Flow, IHC, Functional Assay, IP, WB
Reactivity:	Mouse
Host:	Rat
Clonality:	Monoclonal
Formulation:	Aqueous buffer, 0.09% sodium azide, may contain carrier protein/stabilizer
Concentration:	lot specific
Purification:	Affinity purified
Conjugation:	Unconjugated
Storage:	Store at -20°C as received.
Stability:	Stable for 12 months from date of receipt.
Gene Name:	integrin beta 1 (fibronectin receptor beta)
Database Link:	NP_034708 Entrez Gene 16412 Mouse P09055

Background: The KMI6 monoclonal antibody reacts with mouse CD29 (integrin β 1), a 120-130 kDa member of the β integrin family expressed by leukocytes, endothelial, smooth muscle and epithelial cells. CD29 binds non-covalently with the α integrins CD49a-f, to form the VLA-1 through VLA-6 complexes, respectively, and also with CD51. These $\alpha\beta$ integrin heterodimers are capable of mediating a variety of cellular responses including adhesion, trafficking, proliferation and differentiation. All of the integrins which include CD29 bind to extracellular matrix proteins including collagen, laminin, fibronectin and vitronectin, whereas some CD29-containing integrins also interact with cellular receptors including VCAM-1 and MadCAM-1. The KMI6 antibody has been shown to be an activating antibody for β 1 integrins, enhancing lymphocyte binding to fibronectin.

Synonyms: CD29; FNBR; GPIIA; MDF2; MSK12; VLA-BETA; VLAB



[View online »](#)

Product images:

Balb/c spleen cell lysate (3×10^5 cells/lane) was resolved by SDS-PAGE under non-reducing conditions, immunoblotted with 2 $\mu\text{g}/\text{mL}$ Anti-Mouse CD29 Purified and revealed with Anti-Rat IgG HRP.