

Product datasheet for **TA320383**

CD11a (ITGAL) Mouse Monoclonal Antibody [Clone ID: HI111]

Product data:

Product Type:	Primary Antibodies
Clone Name:	HI111
Applications:	FC
Recommended Dilution:	Flow, IHC, Functional Assay
Reactivity:	Human
Host:	Mouse
Clonality:	Monoclonal
Formulation:	Aqueous buffer, 0.09% sodium azide, may contain carrier protein/stabilizer
Concentration:	lot specific
Purification:	Affinity purified
Conjugation:	Unconjugated
Storage:	Store at -20°C as received.
Stability:	Stable for 12 months from date of receipt.
Gene Name:	integrin subunit alpha L
Database Link:	NP_002200 Entrez Gene 3683 Human P20701

Background: The HI111 monoclonal antibody reacts with human CD11a, the 180 kDa integrin α L, also known as the lymphocyte function associated antigen-1 (LFA-1) α chain. LFA-1, formed by non-covalent association of CD11a with CD18 (integrin β 2), serves as an important adhesion molecule involved in lymphocyte and granulocyte function. CD54 (ICAM-1), CD102 (ICAM-2), and CD50 (ICAM-3) are ligands for LFA-1. CD11a is expressed by all leukocytes.

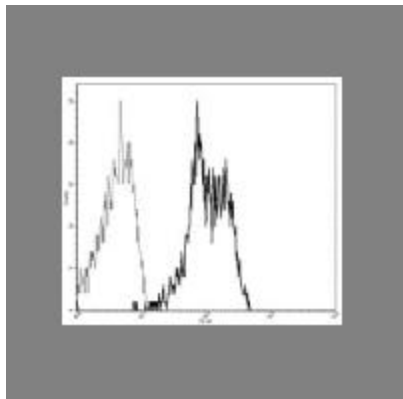
Synonyms: CD11A; LFA-1; LFA1A

Protein Families: Druggable Genome, ES Cell Differentiation/IPS, Transmembrane

Protein Pathways: Cell adhesion molecules (CAMs), Leukocyte transendothelial migration, Natural killer cell mediated cytotoxicity, Regulation of actin cytoskeleton, Viral myocarditis



[View online »](#)

Product images:

Staining of normal human peripheral blood cells with Anti-Human CD11a FITC.