

## Product datasheet for **TA320382**

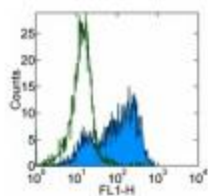
### Integrin alpha E (ITGAE) Mouse Monoclonal Antibody [Clone ID: B-ly7]

#### Product data:

Product Type:	Primary Antibodies
Clone Name:	B-ly7
Applications:	FC
Recommended Dilution:	Flow, IHC
Reactivity:	Human
Host:	Mouse
Clonality:	Monoclonal
Formulation:	Aqueous buffer, 0.09% sodium azide, may contain carrier protein/stabilizer
Concentration:	lot specific
Purification:	Affinity purified
Conjugation:	Unconjugated
Storage:	Store at -20°C as received.
Stability:	Stable for 12 months from date of receipt.
Gene Name:	integrin subunit alpha E
Database Link:	<a href="#">NP_002199</a> <a href="#">Entrez Gene 3682 Human P38570</a>
Background:	The B-Ly7 monoclonal antibody reacts with human CD103, the $\alpha$ E integrin. CD103 non-covalently associates with integrin $\beta$ 7. CD103 is expressed mainly on intraepithelial lymphocytes and a small subset of peripheral lymphocytes. CD103 is also expressed by hairy cell leukemia (HCL) and by some chronic B cell lymphocytic leukemias. In vitro stimulation of human T cells with mitogens induces upregulation of CD103. Epithelial cell antigen, E-cadherin, binds to CD103 and mediates homing of lymphocytes to the intestinal epithelium.
Synonyms:	CD103; HUMINAE
Protein Families:	Druggable Genome, ES Cell Differentiation/IPS, Transmembrane
Protein Pathways:	Regulation of actin cytoskeleton



[View online »](#)

**Product images:**

Staining of 3-day PHA-stimulated normal human peripheral blood cells with 0.25 ug of Mouse IgG1 kappa Isotype Control Purified (open histogram) or 0.25 ug of Anti-Human CD103 (Integrin alpha E) Purified (filled histogram) followed by Anti-Mouse IgG FITC. Total viable cells were used for analysis.