

## Product datasheet for **TA320379**

### Integrin alpha 5 (ITGA5) Mouse Monoclonal Antibody [Clone ID: eBioSAM-1 (SAM-1, SAM1)]

#### Product data:

Product Type:	Primary Antibodies
Clone Name:	eBioSAM-1 (SAM-1, SAM1)
Applications:	FC
Recommended Dilution:	Flow, IHC, IP
Reactivity:	Human
Host:	Mouse
Clonality:	Monoclonal
Formulation:	Aqueous buffer, 0.09% sodium azide, may contain carrier protein/stabilizer
Concentration:	lot specific
Purification:	Affinity purified
Conjugation:	Unconjugated
Storage:	Store at -20°C as received.
Stability:	Stable for 12 months from date of receipt.
Gene Name:	integrin subunit alpha 5
Database Link:	<a href="#">NP_002196</a> <a href="#">Entrez Gene 3678 Human</a> <a href="#">P08648</a>

**Background:** The eBioSAM-1 monoclonal antibody reacts with human integrin alpha 5, also known as fibronectin receptor alpha chain, very late activation antigen 5 alpha, and CD49e. Integrins are composed of an alpha chain and a beta chain, which non-covalently associate to form the functional integrin. Integrin heterodimers participate in cell surface-mediated signaling and adhesion functions. Integrin alpha 5 undergoes post-translational cleavage in its extracellular domain to yield disulfide linked light and heavy chains that join with Integrin beta 1 (CD29) to form the fibronectin receptor, also known as the very late activation antigen-5 (VLA-5) complex. Integrin alpha 5 is expressed on thymocytes, T cells, monocytes, platelets, early B cells, and activated B cells.

**Synonyms:** CD49e; FNRA; VLA-5; VLA5A

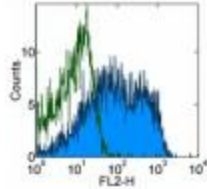
**Protein Families:** Druggable Genome, ES Cell Differentiation/IPS, Transmembrane



[View online »](#)

**Protein Pathways:** Arrhythmogenic right ventricular cardiomyopathy (ARVC), Dilated cardiomyopathy, ECM-receptor interaction, Focal adhesion, Hematopoietic cell lineage, Hypertrophic cardiomyopathy (HCM), Regulation of actin cytoskeleton

**Product images:**



Staining of normal human peripheral blood cells with 0.25 ug of Mouse IgG1 kappa Isotype Control Purified (open histogram) or 0.25 ug of Anti-Human CD49e (Integrin alpha 5) Purified (filled histogram) followed by Anti-Mouse IgG Biotin and Streptavidin PE. Cells in the lymphocyte gate were used for analysis.