

Product datasheet for **TA320369**

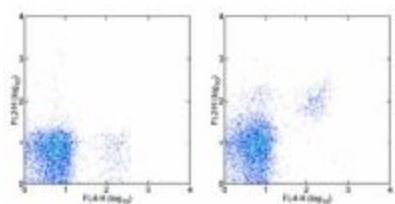
IL2rb Rat Monoclonal Antibody [Clone ID: TM-b1 (TM-beta1)]

Product data:

Product Type:	Primary Antibodies
Clone Name:	TM-b1 (TM-beta1)
Applications:	FC
Recommended Dilution:	Flow, Functional Assay, IP
Reactivity:	Mouse
Host:	Rat
Clonality:	Monoclonal
Formulation:	Aqueous buffer, 0.09% sodium azide, may contain carrier protein/stabilizer
Concentration:	lot specific
Purification:	Affinity purified
Conjugation:	Unconjugated
Storage:	Store at -20°C as received.
Stability:	Stable for 12 months from date of receipt.
Gene Name:	interleukin 2 receptor, beta chain
Database Link:	NP_032394 Entrez Gene 16185 Mouse P16297
Background:	The TM-b1 monoclonal antibody reacts with mouse CD122, the 90-110 kDa interleukin-2 receptor beta chain (IL-2R beta). CD122 is expressed by NK cells and some T cells in the periphery, and is upregulated by activation. CD122 associates with CD25 and CD132 (common gamma chain) to form the high affinity IL-2 receptor. High affinity binding of IL-2 to the IL-2 receptor is inhibited by the TM-b1 antibody.
Synonyms:	CD122; P70-75; p75



[View online »](#)

Product images:

Staining of C57Bl/6 splenocytes with Anti-Mouse NK1.1 APC and 0.25 ug of Rat IgG2b K Isotype Control Purified (left) or 0.5 ug of Anti-Mouse CD122 Purified (right) followed by Anti-Rat IgG Biotin and Streptavidin PE. Cells in the lymphocyte gate were used for analysis.