

## Product datasheet for **TA320368**

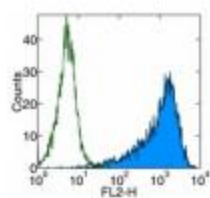
### IL2 Receptor alpha (IL2RA) Mouse Monoclonal Antibody [Clone ID: BC96]

#### Product data:

|                       |  |
|-----------------------|--|
| Product Type:         | Primary Antibodies   |
| Clone Name:           | BC96   |
| Applications:         | FC   |
| Recommended Dilution: | Flow   |
| Reactivity:           | Human  |
| Host:                 | Mouse  |
| Clonality:            | Monoclonal   |
| Formulation:          | Aqueous buffer, 0.09% sodium azide, may contain carrier protein/stabilizer   |
| Concentration:        | lot specific   |
| Purification:         | Affinity purified  |
| Conjugation:          | Unconjugated   |
| Storage:              | Store at -20°C as received.  |
| Stability:            | Stable for 12 months from date of receipt.   |
| Gene Name:            | interleukin 2 receptor subunit alpha   |
| Database Link:        | <a href="#">NP_000408</a><br><a href="#">Entrez Gene 3559 Human P01589</a>   |
| Background:           | The BC96 monoclonal antibody reacts with human CD25, the 55 kDa interleukin-2 receptor $\alpha$ chain (IL-2R $\alpha$ ). CD25 is expressed by early progenitors of T and B lineage as well as by activated mature T and B lymphocytes. By itself, CD25 binds IL-2 only with low affinity. However, CD25 associates with CD122 (IL-2 receptor $\beta$ chain) and CD132 (common $\gamma$ chain) to form the high affinity IL-2 receptor. CD25 plays a role in lymphocyte differentiating and activation/proliferation. |
| Synonyms:             | CD25; IDDM10; IL2R; p55; TCGFR   |
| Protein Families:     | Druggable Genome, ES Cell Differentiation/IPS, Transmembrane   |
| Protein Pathways:     | Cytokine-cytokine receptor interaction, Endocytosis, Hematopoietic cell lineage, Jak-STAT signaling pathway  |



[View online »](#)

**Product images:**

Staining of PHA stimulated human PBMC with Anti-Human CD25 PE. Appropriate isotype controls were used (open histogram). Total viable cells were used for analysis.