

Product datasheet for **TA320366**

IL1 beta (IL1B) Mouse Monoclonal Antibody [Clone ID: CRM56]

Product data:

Product Type:	Primary Antibodies
Clone Name:	CRM56
Applications:	FC
Recommended Dilution:	Flow, ELISA, Functional Assay
Reactivity:	Human
Host:	Mouse
Clonality:	Monoclonal
Formulation:	PBS, 0.09% sodium azide.
Concentration:	lot specific
Purification:	Affinity purified
Conjugation:	Unconjugated
Storage:	Store at -20°C as received.
Stability:	Stable for 12 months from date of receipt.
Gene Name:	interleukin 1 beta
Database Link:	NP_000567 Entrez Gene 3553 Human P01584

Background: The CRM56 antibody reacts with human and baboon interleukin-1 beta; (IL-1 beta). IL-1 beta is a 17 kDa factor secreted primarily by monocytes. IL-1 has effects on T-helper cells, inducing IL-2 secretion and expression of IL-2 receptors. IL-1 has effects on B cells, promoting cell proliferation and immunoglobulin synthesis.

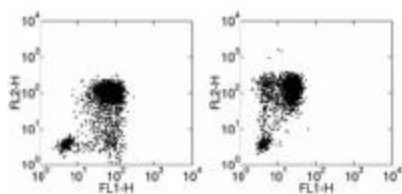
Synonyms: IL-1; IL1-BETA; IL1F2

Protein Families: Druggable Genome, Secreted Protein

Protein Pathways: Alzheimer's disease, Apoptosis, Cytokine-cytokine receptor interaction, Cytosolic DNA-sensing pathway, Graft-versus-host disease, Hematopoietic cell lineage, MAPK signaling pathway, NOD-like receptor signaling pathway, Prion diseases, Toll-like receptor signaling pathway, Type I diabetes mellitus



[View online »](#)

Product images:

Staining of human peripheral blood mononuclear cells stimulated with LPS in the presence of Brefeldin A for 4 hours with Anti-Human CD14 PE (left) or Anti-Human CD14 FITC (right) followed by intracellularly Anti-Human IL-1 beta PE.