

## Product datasheet for **TA320359**

### IL15RA Mouse Monoclonal Antibody [Clone ID: eBioJM7A4]

#### Product data:

Product Type:	Primary Antibodies
Clone Name:	eBioJM7A4
Applications:	FC
Recommended Dilution:	Flow, IP, WB
Reactivity:	Human
Host:	Mouse
Clonality:	Monoclonal
Formulation:	Aqueous buffer, 0.09% sodium azide, may contain carrier protein/stabilizer
Concentration:	lot specific
Purification:	Affinity purified
Conjugation:	Unconjugated
Storage:	Store at -20°C as received.
Stability:	Stable for 12 months from date of receipt.
Gene Name:	interleukin 15 receptor subunit alpha
Database Link:	<a href="#">NP_751950</a> <a href="#">Entrez Gene 3601 Human</a> <a href="#">Q13261</a>

**Background:** The eBioJM7A4 monoclonal antibody reacts with the IL-15 receptor alpha chain (IL-15R $\alpha$ ). IL-15 and IL-2 are cytokines with overlapping, but distinct, biologic effects. Their receptors share 2 subunits, the IL2R- $\beta$  and - $\gamma$  chains, which are essential for signal transduction. The IL-15R- $\alpha$  receptor is structurally related to IL-2R- $\alpha$ . However, the IL-15R $\alpha$  alone binds IL-15 with a 1,000-fold higher affinity than that seen with IL-2R- $\alpha$  and IL-2. In the human, 3 differentially spliced human IL15R- $\alpha$  variants that are all capable of high affinity binding of IL-15 have been isolated. The cytoplasmic domain of IL15R- $\alpha$ , like that of IL2R- $\alpha$ , is dispensable for mitogenic signaling, suggesting that the primary role of the alpha chains is to confer high affinity binding. At high concentrations, IL-15, like IL-2, is able to signal through a complex of IL2R- $\beta$  and IL2R- $\gamma$  in the absence of the alpha subunit.

**Synonyms:** CD215

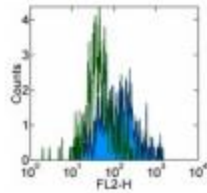


[View online »](#)

**Protein Families:** Druggable Genome, Secreted Protein

**Protein Pathways:** Cytokine-cytokine receptor interaction, Jak-STAT signaling pathway

**Product images:**



Staining of adherent human PBMCs stimulated with LPS and IFN gamma for 24 hours with 0.25 ug of Mouse IgG2b K Isotype Control Purified (open histogram) or 0.25 ug of Anti-Human IL-15 Receptor Purified (filled histogram) followed by Anti-Mouse IgG Biotin and Streptavidin PE. Cells in the large scatter population were used for analysis.