

## Product datasheet for **TA320351**

### ICAM2 Mouse Monoclonal Antibody [Clone ID: CBRIC2/2]

#### Product data:

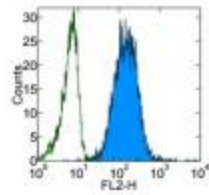
Product Type:	Primary Antibodies
Clone Name:	CBRIC2/2
Applications:	FC
Recommended Dilution:	Flow, IHC, Functional Assay, IP, WB
Reactivity:	Human
Host:	Mouse
Clonality:	Monoclonal
Formulation:	Aqueous buffer, 0.09% sodium azide, may contain carrier protein/stabilizer
Concentration:	lot specific
Purification:	Affinity purified
Conjugation:	Unconjugated
Storage:	Store at -20°C as received.
Stability:	Stable for 12 months from date of receipt.
Gene Name:	intercellular adhesion molecule 2
Database Link:	<a href="#">NP_000864</a> <a href="#">Entrez Gene 3384 Human</a> <a href="#">P13598</a>

**Background:** The CBRIC2/2 monoclonal antibody reacts with human ICAM-2 (CD102). ICAM-2 is a 55-65 kD transmembrane glycoprotein possessing 2 extracellular Ig domains, a single transmembrane domain, and a short 26-amino acid cytoplasmic domain. ICAM-2 is expressed on most leukocytes, and is strongly expressed on vascular endothelial cells. ICAM-2 is a ligand of integrin CD11a/CD18 (LFA-1), and also has been reported to bind integrin CD11b/CD18 (Mac-1). ICAM-2 is an intercellular adhesion molecule involved in lymphocyte homing to sites of inflammation. The CBRIC2/2 antibody has been reported to have blocking activity.

<b>Synonyms:</b>	CD102
<b>Protein Families:</b>	ES Cell Differentiation/IPS, Transmembrane
<b>Protein Pathways:</b>	Cell adhesion molecules (CAMs), Natural killer cell mediated cytotoxicity



[View online »](#)

**Product images:**

Staining of normal human peripheral blood cells with 0.06 ug of Mouse IgG2a kappa Isotype Control Purified (open histogram) or 0.06 ug of Anti-Human CD102 (ICAM-2) Purified (filled histogram) followed by F (ab')<sub>2</sub> Anti-Mouse IgG PE. Cells in the monocyte gate were used for analysis.