

Product datasheet for **TA320346**

HLAE (HLA-E) Mouse Monoclonal Antibody [Clone ID: 3D12HLA-E]

Product data:

Product Type:	Primary Antibodies
Clone Name:	3D12HLA-E
Applications:	FC
Recommended Dilution:	Flow, IP, WB
Reactivity:	Human
Host:	Mouse
Clonality:	Monoclonal
Formulation:	Aqueous buffer, 0.09% sodium azide, may contain carrier protein/stabilizer
Concentration:	lot specific
Purification:	Affinity purified
Conjugation:	Unconjugated
Storage:	Store at -20°C as received.
Stability:	Stable for 12 months from date of receipt.
Gene Name:	major histocompatibility complex, class I, E
Database Link:	NP_005507 Entrez Gene 3133 Human P13747

Background: The monoclonal antibody 3D12 (HLA-E) recognizes human HLA-E, a member of the Human Leukocyte Antigen family. HLA-E is a MHC Class IB member, which has a specialized role in NK cell recognition. Binding of a restricted set of peptides derived from other Class I leader sequences to the HLA-E and B2M (beta2 microglobulin) complex leads to interaction with NKG2A on NK cells. This binding protects the HLA-G-expressing cell from NK cell killing. HLA-E expression is ubiquitous.

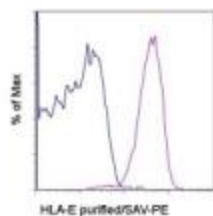
Synonyms: HLA-6.2; QA1

Protein Families: Transmembrane

Protein Pathways: Allograft rejection, Antigen processing and presentation, Autoimmune thyroid disease, Cell adhesion molecules (CAMs), Endocytosis, Graft-versus-host disease, Natural killer cell mediated cytotoxicity, Type I diabetes mellitus, Viral myocarditis



[View online »](#)

Product images:

Staining of normal human peripheral blood cells with 0.5 ug of Mouse IgG1 K Isotype Control Purified (open histogram) or 0.5 ug of Anti-Human HLA-E Purified (filled histogram) followed by Anti-Mouse IgG Biotin and Streptavidin PE. Cells in the lymphocyte gate were used for analysis.