

Product datasheet for **TA320345**

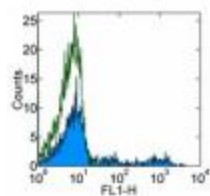
HLA-DRA Mouse Monoclonal Antibody [Clone ID: LN3]

Product data:

Product Type:	Primary Antibodies
Clone Name:	LN3
Applications:	FC
Recommended Dilution:	Flow, IHC
Reactivity:	Human
Host:	Mouse
Clonality:	Monoclonal
Formulation:	Aqueous buffer, 0.09% sodium azide, may contain carrier protein/stabilizer
Concentration:	lot specific
Purification:	Affinity purified
Conjugation:	Unconjugated
Storage:	Store at -20°C as received.
Stability:	Stable for 12 months from date of receipt.
Gene Name:	major histocompatibility complex, class II, DR alpha
Database Link:	NP_061984 Entrez Gene 3122 Human P01903
Background:	The LN3 mAb reacts with the human major histocompatibility complex (MHC) class II, HLA-DR. HLA-DR is expressed on the surface of human antigen presenting cells (APC) including B cells, monocytes, macrophages, DCs, and activated T cells. HLA-DR is a heterodimeric transmembrane protein composed of α and β subunits and plays an important role in the presentation of peptides to CD4+ T lymphocytes.
Synonyms:	HLA-DRA1; MLRW
Protein Families:	Transmembrane
Protein Pathways:	Allograft rejection, Antigen processing and presentation, Asthma, Autoimmune thyroid disease, Cell adhesion molecules (CAMs), Graft-versus-host disease, Hematopoietic cell lineage, Systemic lupus erythematosus, Type I diabetes mellitus, Viral myocarditis



[View online »](#)

Product images:

Staining of normal human peripheral blood cells with 0.125 ug of Purified Mouse IgG2b Isotype Control (open histogram) or 0.125 ug of Anti-Human HLA-DR Purified (filled histogram) followed by Anti-Mouse IgG FITC. Cells in the lymphocyte gate were used for analysis.