

## Product datasheet for **TA320340**

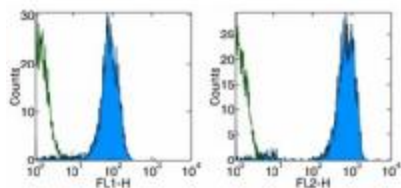
### CD42b (GP1BA) Mouse Monoclonal Antibody [Clone ID: HIP1]

#### Product data:

Product Type:	Primary Antibodies
Clone Name:	HIP1
Applications:	FC
Recommended Dilution:	Flow, IHC, Functional Assay, WB
Reactivity:	Human
Host:	Mouse
Clonality:	Monoclonal
Formulation:	Aqueous buffer, 0.09% sodium azide, may contain carrier protein/stabilizer
Concentration:	lot specific
Purification:	Affinity purified
Conjugation:	Unconjugated
Storage:	Store at -20°C as received.
Stability:	Stable for 12 months from date of receipt.
Gene Name:	glycoprotein Ib platelet alpha subunit
Database Link:	<a href="#">NP_000164</a> <a href="#">Entrez Gene 2811 Human P07359</a>
Background:	The HIP1 monoclonal antibody reacts with the human CD42b molecule, a 135 kDa transmembrane protein also known as platelet gplb.
Synonyms:	BDPLT1; BDPLT3; BSS; CD42B; CD42b-alpha; DBPLT3; GP1B; GPIbA; GPIbalpha; VWDP
Protein Families:	Druggable Genome, Transmembrane
Protein Pathways:	ECM-receptor interaction, Hematopoietic cell lineage



[View online »](#)

**Product images:**

Staining of human platelets with Anti-Human CD42b FITC (left) and PE (right). Appropriate isotype controls were used (open histogram). Total cells were used for analysis.