

## Product datasheet for **TA320339**

### **GATA4 Rat Monoclonal Antibody [Clone ID: eBioEvan]**

#### **Product data:**

Product Type:	Primary Antibodies
Clone Name:	eBioEvan
Applications:	WB
Recommended Dilution:	IHC, WB
Reactivity:	Human, Mouse
Host:	Rat
Clonality:	Monoclonal
Formulation:	Aqueous buffer, 0.09% sodium azide, may contain carrier protein/stabilizer
Concentration:	lot specific
Purification:	Affinity purified
Conjugation:	Unconjugated
Storage:	Store at -20°C as received.
Stability:	Stable for 12 months from date of receipt.
Gene Name:	GATA binding protein 4
Database Link:	<a href="#">NP_002043</a> <a href="#">Entrez Gene 14463 Mouse</a> <a href="#">Entrez Gene 2626 Human</a> <a href="#">P43694</a>

**Background:** The eBioEvan monoclonal antibody reacts with mouse and human Gata-4. In a western blot of C57Bl/6 and BALB/c mouse heart lysates, a single band is present, suggesting that this antibody does not cross-react with Gata-5 or Gata-6, which are also expressed in the heart, but with different molecular weights. The eBioEvan monoclonal antibody has been successfully used in flow cytometry on HEK 293T cells transiently transfected with either mouse Gata-4 or human Gata-4. Gata-4 is a member of the GATA family of transcription factors, which are characterized by a conserved DNA binding domain containing two zinc fingers. The mouse Gata-4 gene encodes a protein of 48kDa. Studies show that Gata-4 plays an important role in controlling cardiomyocyte differentiation, proliferation and survival. Gata-4 is expressed during fetal development, as well as in the adult mouse heart. It also appears to modulate gene expression in the gut, liver, and gonads.

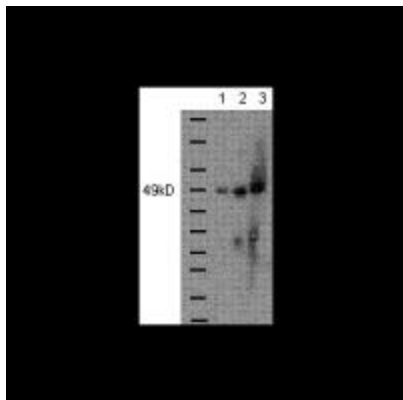


[View online »](#)

**Synonyms:** ASD2; TACHD; TOF; VSD1

**Protein Families:** Embryonic stem cells, ES Cell Differentiation/IPS, Induced pluripotent stem cells, Transcription Factors

**Product images:**



Anti-Human/Mouse Gata-4 Purified (2 ug/ml) was used in a western blot of SDS lysates. Lane 1: NIH-3T3, Lane 2: C57Bl/6 mouse heart, Lane 3: BALB/c mouse heart.