

Product datasheet for **TA320329**

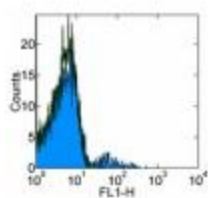
CD23 (FCER2) Mouse Monoclonal Antibody [Clone ID: EBVCS2]

Product data:

Product Type:	Primary Antibodies
Clone Name:	EBVCS2
Applications:	FC
Recommended Dilution:	Flow, IHC
Reactivity:	Human
Host:	Mouse
Clonality:	Monoclonal
Formulation:	Aqueous buffer, 0.09% sodium azide, may contain carrier protein/stabilizer
Concentration:	lot specific
Purification:	Affinity purified
Conjugation:	Unconjugated
Storage:	Store at -20°C as received.
Stability:	Stable for 12 months from date of receipt.
Gene Name:	Fc fragment of IgE receptor II
Database Link:	NP_001993 Entrez Gene 2208 Human P06734
Background:	The EBVCS2 monoclonal antibody reacts with human CD23, a 45 kDa type II transmembrane glycoprotein. CD23 is expressed on mature B cells, mantle zone B cells, follicular dendritic cells and at low levels on T, NK, langerhans cells and platelets. Expression of CD23 is upregulated upon B cell activation, and soluble forms of the antigen have been reported to be biologically active. CD23 is a low affinity receptor for IgE and is thought to play a role in the regulation of IgE response and B cell activation. CD21 and the alpha subunit of CD11b and CD11c bind to CD23.
Synonyms:	BLAST-2; CD23; CD23A; CLEC4J; FCE2; IGBF
Protein Families:	Secreted Protein, Transmembrane
Protein Pathways:	Hematopoietic cell lineage



[View online »](#)

Product images:

Staining of normal human peripheral blood cells with 0.5 ug of Mouse IgG1 kappa Isotype Control Purified (open histogram) or 0.25ug of Anti-Human CD23 Purified (filled histogram) followed by Anti-Mouse IgG FITC. Cells in the lymphocyte gate were used for analysis.