

Product datasheet for **TA320320**

Cytochrome C (CYCS) Mouse Monoclonal Antibody [Clone ID: 7H8]

Product data:

Product Type:	Primary Antibodies
Clone Name:	7H8
Applications:	WB
Recommended Dilution:	WB
Reactivity:	Human, Mouse, Rat
Host:	Mouse
Clonality:	Monoclonal
Formulation:	Aqueous buffer, 0.09% sodium azide, may contain carrier protein/stabilizer
Concentration:	lot specific
Purification:	Affinity purified
Conjugation:	Unconjugated
Storage:	Store at -20°C as received.
Stability:	Stable for 12 months from date of receipt.
Gene Name:	cytochrome c, somatic
Database Link:	NP_061820 Entrez Gene 13063 MouseEntrez Gene 25309 RatEntrez Gene 54205 Human P99999

Background: This 7H8 monoclonal antibody recognizes human, mouse, and rat cytochrome c, an 11-kDa heme-binding protein found in plants, animals, and other organisms. Cytochrome c is associated with the inner membrane of the mitochondrion. This molecule plays a role in electron transfer during cellular respiration. Moreover, in response to pro-apoptotic stimuli and subsequent calcium level elevation, cytochrome c is released from mitochondria, leading to caspase activation.

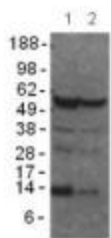
Synonyms: CYC; HCS; THC4

Protein Families: Druggable Genome

Protein Pathways: Alzheimer's disease, Amyotrophic lateral sclerosis (ALS), Apoptosis, Colorectal cancer, Huntington's disease, p53 signaling pathway, Parkinson's disease, Pathways in cancer, Small cell lung cancer, Viral myocarditis



[View online »](#)

Product images:

Immunoblotting of cell lysates prepared from HeLa (lane 1) and Jurkat (lane 2) cell lines under reducing conditions using 5 ug/mL Anti-Cytochrome C Purified. Bands were visualized using conjugated Anti-Mouse IgG HRP.