

## Product datasheet for **TA320319**

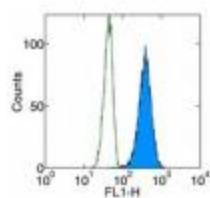
### Cytochrome C (CYCS) Mouse Monoclonal Antibody [Clone ID: 6H2]

#### Product data:

Product Type:	Primary Antibodies
Clone Name:	6H2
Applications:	FC
Recommended Dilution:	Flow, IP
Reactivity:	Human, Mouse, Rat
Host:	Mouse
Clonality:	Monoclonal
Formulation:	Aqueous buffer, 0.09% sodium azide, may contain carrier protein/stabilizer
Concentration:	lot specific
Purification:	Affinity purified
Conjugation:	Unconjugated
Storage:	Store at -20°C as received.
Stability:	Stable for 12 months from date of receipt.
Gene Name:	cytochrome c, somatic
Database Link:	<a href="#">NP_061820</a> <a href="#">Entrez Gene 13063 Mouse</a> <a href="#">Entrez Gene 25309 Rat</a> <a href="#">Entrez Gene 54205 Human</a> <a href="#">P99999</a>
Background:	The 6H2 antibody reacts with the native form of mouse, human, and rat cytochrome c.
Synonyms:	CYC; HCS; THC4
Protein Families:	Druggable Genome
Protein Pathways:	Alzheimer's disease, Amyotrophic lateral sclerosis (ALS), Apoptosis, Colorectal cancer, Huntington's disease, p53 signaling pathway, Parkinson's disease, Pathways in cancer, Small cell lung cancer, Viral myocarditis



[View online »](#)

**Product images:**

Intracellular staining of HeLa cells with Anti-Cytochrome C FITC. Appropriate isotype controls were used (open histogram). Total cells were used for analysis.