

Product datasheet for **TA320315**

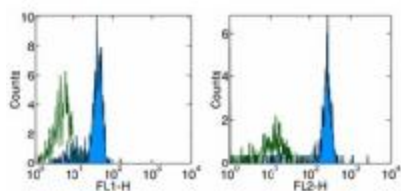
GM CSF Receptor alpha (CSF2RA) Mouse Monoclonal Antibody [Clone ID: 4H1]

Product data:

Product Type:	Primary Antibodies
Clone Name:	4H1
Applications:	FC
Recommended Dilution:	Flow
Reactivity:	Human
Host:	Mouse
Clonality:	Monoclonal
Formulation:	Aqueous buffer, 0.09% sodium azide, may contain carrier protein/stabilizer
Concentration:	lot specific
Purification:	Affinity purified
Conjugation:	Unconjugated
Storage:	Store at -20°C as received.
Stability:	Stable for 12 months from date of receipt.
Gene Name:	colony stimulating factor 2 receptor alpha subunit
Database Link:	NP_758451 Entrez Gene 1438 Human P15509
Background:	The 4H1 monoclonal antibody reacts with the human CD116 molecule, the α subunit of GM-CSF receptor. The α subunit associates with the common β chain (CD131) to form the high affinity receptor for GM-CSF. The GM-CSFR α chain is expressed by granulocytes, monocytes, endothelial cells, fibroblasts and some tumor cells.
Synonyms:	CD116; CDw116; CSF2R; CSF2RAX; CSF2RAY; CSF2RX; CSF2RY; GMCSFR; GMR; MGC3848; MGC4838
Protein Families:	Druggable Genome, Secreted Protein, Transmembrane
Protein Pathways:	Cytokine-cytokine receptor interaction, Hematopoietic cell lineage, Jak-STAT signaling pathway, Pathways in cancer



[View online »](#)

Product images:

Surface staining of normal human peripheral blood cells with Anti-Human CD116 FITC (left) and PE (right). Appropriate isotype controls were used (open histogram). Cells in the monocyte population were used for analysis.