

Product datasheet for **TA320300**

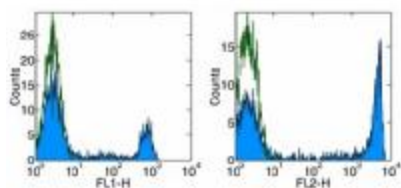
CD8A Mouse Monoclonal Antibody [Clone ID: HIT8a]

Product data:

Product Type:	Primary Antibodies
Clone Name:	HIT8a
Applications:	FC
Recommended Dilution:	Flow, IHC
Reactivity:	Human
Host:	Mouse
Clonality:	Monoclonal
Formulation:	Aqueous buffer, 0.09% sodium azide, may contain carrier protein/stabilizer
Concentration:	lot specific
Purification:	Affinity purified
Conjugation:	Unconjugated
Storage:	Store at -20°C as received.
Stability:	Stable for 12 months from date of receipt.
Gene Name:	CD8a molecule
Database Link:	NP_741969 Entrez Gene 925 Human P01732
Background:	The HIT8a monoclonal antibody reacts with the human CD8a molecule, an approximately 32-34 kDa cell surface receptor expressed either as a heterodimer with the CD8 beta chain (CD8 alpha/beta) or as a homodimer (CD8 alpha/alpha). A majority of thymocytes and a subpopulation of mature T cells and NK cells express CD8a. CD8 binds to MHC class I and through its association with protein tyrosine kinase p56lck plays a role in T cell development and activation of mature T cells.
Synonyms:	CD8; Leu2; MAL; p32
Protein Families:	Adult stem cells, Druggable Genome, ES Cell Differentiation/IPS, Secreted Protein, Transmembrane
Protein Pathways:	Antigen processing and presentation, Cell adhesion molecules (CAMs), Hematopoietic cell lineage, Primary immunodeficiency, T cell receptor signaling pathway



[View online »](#)

Product images:

Staining of normal human peripheral blood cells with Anti-Human CD8a FITC (left) and PE (right). Autofluorescence is indicated by open histogram. Cells in the lymphocyte population were used for analysis.