

## Product datasheet for **TA320282**

### CD48 Mouse Monoclonal Antibody [Clone ID: eBio156-4H9 (156-4H9)]

#### Product data:

Product Type:	Primary Antibodies
Clone Name:	eBio156-4H9 (156-4H9)
Applications:	FC
Recommended Dilution:	Flow
Reactivity:	Human
Host:	Mouse
Clonality:	Monoclonal
Formulation:	Aqueous buffer, 0.09% sodium azide, may contain carrier protein/stabilizer
Concentration:	lot specific
Purification:	Affinity purified
Conjugation:	Unconjugated
Storage:	Store at -20°C as received.
Stability:	Stable for 12 months from date of receipt.
Gene Name:	CD48 molecule
Database Link:	<a href="#">NP_001769</a> <a href="#">Entrez Gene 962 Human P09326</a>

**Background:** The eBio156-4H9 monoclonal antibody reacts with the human CD48 antigen, also known as B cell activation marker 1, SLAM family member 2, Blast-1 (human), and OX-45 (rat). CD48, a member of the SLAM family and Ig superfamily, is a 45 kDa GPI-linked glycoprotein expressed on the majority of hematopoietic cells. CD2 is the low affinity ligand for CD48. Recent publications have reported differential expression in mice of members of the SLAM family including CD48, CD150, and CD244 among functionally distinct bone marrow hematopoietic progenitors providing a useful tool for prediction of the primitiveness of hematopoietic progenitors. Expression of CD48 in hematopoietic cells is found on many leukocytes with little to none on granulocytes and absent on platelets and erythrocytes. Expression increases on B cells with activation.

**Synonyms:** BCM1; BLAST; BLAST1; hCD48; mCD48; MEM-102; SLAMF2

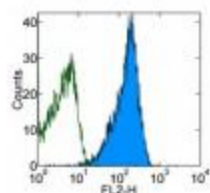


[View online »](#)

**Protein Families:** Druggable Genome, Transmembrane

**Protein Pathways:** Natural killer cell mediated cytotoxicity

**Product images:**



Staining of normal human peripheral blood mononuclear cells with 0.5 ug of Mouse IgG1 kappa Isotype Control Purified (open histogram) or 0.5 ug of Anti-Human CD48 Purified (filled histogram) followed by F (ab')<sub>2</sub> Anti-Mouse IgG PE. Cells in the lymphocyte gate were used for analysis.