

## Product datasheet for **TA320272**

### CD3E Mouse Monoclonal Antibody [Clone ID: HIT3a]

#### Product data:

Product Type:	Primary Antibodies
Clone Name:	HIT3a
Applications:	FC
Recommended Dilution:	Flow
Reactivity:	Human
Host:	Mouse
Clonality:	Monoclonal
Formulation:	Aqueous buffer, 0.09% sodium azide, may contain carrier protein/stabilizer
Concentration:	lot specific
Purification:	Affinity purified
Conjugation:	Unconjugated
Storage:	Store at -20°C as received.
Stability:	Stable for 12 months from date of receipt.
Gene Name:	CD3e molecule
Database Link:	<a href="#">NP_000724</a> <a href="#">Entrez Gene 916 Human</a> <a href="#">P07766</a>

**Background:** The HIT3a monoclonal antibody reacts with human CD3e, a 20 kDa subunit of the TCR complex. Along with the other CD3 subunits gamma and delta, the epsilon chain is required for proper assembly, trafficking and surface expression of the TCR complex. CD3 is expressed by thymocytes in a developmentally regulated manner and by all mature T cells. Crosslinking of TCR with HIT3a initiates an intracellular biochemical pathway resulting in cellular activation and proliferation.

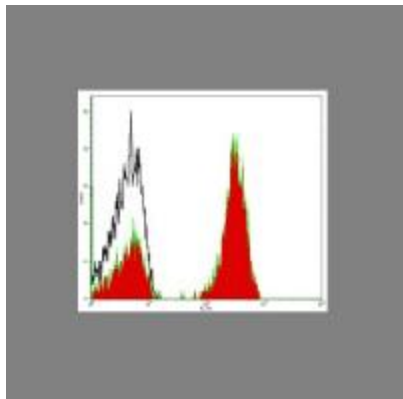
**Synonyms:** IMD18; T3E; TCRE

**Protein Families:** Druggable Genome, Transmembrane

**Protein Pathways:** Hematopoietic cell lineage, Primary immunodeficiency, T cell receptor signaling pathway



[View online »](#)

**Product images:**

Staining of normal human peripheral blood cells with Mouse IgG2a K Isotype Control Purified (open histogram) or Anti-Human CD3 Purified (filled histogram) followed by Anti-Mouse IgG FITC. Cells in the lymphocyte gate were used for analysis.