

## Product datasheet for **TA320268**

### CD3D Mouse Monoclonal Antibody [Clone ID: B1.1]

#### Product data:

Product Type:	Primary Antibodies
Clone Name:	B1.1
Applications:	FC
Recommended Dilution:	Flow
Reactivity:	Human
Host:	Mouse
Clonality:	Monoclonal
Formulation:	Aqueous buffer, 0.09% sodium azide, may contain carrier protein/stabilizer
Concentration:	lot specific
Purification:	Affinity purified
Conjugation:	Unconjugated
Storage:	Store at -20°C as received.
Stability:	Stable for 12 months from date of receipt.
Gene Name:	CD3d molecule
Database Link:	<a href="#">NP_000723</a> <a href="#">Entrez Gene 915 Human</a> <a href="#">P04234</a>

**Background:** The B1.1 monoclonal antibody reacts with the human gamma delta TCR complex. The gamma delta TCR is expressed by a small subset of T cells in the thymus, peripheral lymphoid tissues, intestinal epithelium, and epidermis. The exact specificity, ligand and function of gamma delta TCR-bearing T cells are not yet fully understood; it is suggested that these cells recognize bacterial ligands and some tumor cells in the context of MHC class I-like gene products and play a role in regulation of the immune response and during bacterial infection. This monoclonal can be used as a phenotypic marker for gamma delta TCR-expressing T cells.

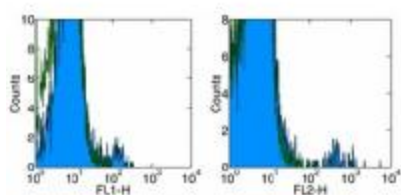
**Synonyms:** CD3-DELTA; IMD19; T3D

**Protein Families:** Druggable Genome

**Protein Pathways:** Hematopoietic cell lineage, Primary immunodeficiency, T cell receptor signaling pathway



[View online »](#)

**Product images:**

Surface staining of normal human peripheral blood cells with Anti-Human gamma delta TCR FITC (left) or PE (right). Appropriate isotype controls were used (open histogram). Cells in the lymphocyte gate were used for analysis.