

Product datasheet for **TA320264**

CD36 Mouse Monoclonal Antibody [Clone ID: eBioNL07 (NL07)]

Product data:

Product Type:	Primary Antibodies
Clone Name:	eBioNL07 (NL07)
Applications:	FC
Recommended Dilution:	Flow
Reactivity:	Human
Host:	Mouse
Clonality:	Monoclonal
Formulation:	Aqueous buffer, 0.09% sodium azide, may contain carrier protein/stabilizer
Concentration:	lot specific
Purification:	Affinity purified
Conjugation:	Unconjugated
Storage:	Store at -20°C as received.
Stability:	Stable for 12 months from date of receipt.
Gene Name:	CD36 molecule
Database Link:	NP_000063 Entrez Gene 948 Human P16671

Background: The monoclonal antibody eBioNL07 recognizes human CD36, which is a member of the class B scavenger receptor family. CD36 was originally identified as a platelet-membrane glycoprotein also called glycoprotein IV and a receptor for thrombospondin-1 (TSP-1) and extracellular matrix proteins. Binding to TSP-1 is in the CLESH (CD36 LIMP-II Emp sequence homology) domain of CD36. CD36 expression is broad and includes microvascular (but not large vessel) endothelium, adipocytes, skeletal muscle, dendritic cells, epithelia of the retina, breast, and intestine, smooth muscle cells, and hematopoietic cells, including erythroid precursors, platelets, monocytes/macrophages, DCs and megakaryocytes. Expression on platelets is absent on Naka negative donors. Unlike other scavenger receptor, CD36 binds LDL that has been exposed to oxidizing conditions. CD36 is also a fatty acid translocase (FAT) necessary for the transport of long-chain fatty acids (LCFAs) and therefore may play a role in atherosclerosis.



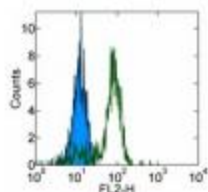
[View online »](#)

Synonyms: BDPLT10; CHDS7; FAT; GP3B; GP4; GPIV; PASIV; SCARB3

Protein Families: Druggable Genome, Transmembrane

Protein Pathways: Adipocytokine signaling pathway, ECM-receptor interaction, Hematopoietic cell lineage, PPAR signaling pathway

Product images:



Staining of normal human peripheral blood cells with 0.25 ug of Mouse IgM Isotype Control Purified (open histogram) or 0.25 ug of Anti-Human CD36 Purified (filled histogram) followed by Anti-Mouse IgM PE. Cells in the monocyte gate were used for analysis.