

## Product datasheet for **TA320262**

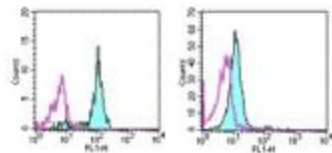
### CD33 Mouse Monoclonal Antibody [Clone ID: WM-53 (WM53)]

#### Product data:

Product Type:	Primary Antibodies
Clone Name:	WM-53 (WM53)
Applications:	FC
Recommended Dilution:	Flow, ICC, IP
Reactivity:	Human
Host:	Mouse
Clonality:	Monoclonal
Formulation:	Aqueous buffer, 0.09% sodium azide, may contain carrier protein/stabilizer
Concentration:	lot specific
Purification:	Affinity purified
Conjugation:	Unconjugated
Storage:	Store at -20°C as received.
Stability:	Stable for 12 months from date of receipt.
Gene Name:	CD33 molecule
Database Link:	<a href="#">NP_001763</a> <a href="#">Entrez Gene 945 Human</a> <a href="#">P20138</a>
Background:	The WM-53 monoclonal antibody reacts with human CD33, also known as GP67 and P67, a 67 kDa type I transmembrane glycoprotein that is a member of the Siglec (sialic acid-binding Ig superfamily lectin) family. It is highly specific to the hematopoietic compartment and is expressed on monocytes, activated T cells, granulocytes, myeloid progenitors, and mast cells.
Synonyms:	p67; SIGLEC-3; SIGLEC3
Protein Families:	Druggable Genome, Transmembrane
Protein Pathways:	Hematopoietic cell lineage



[View online »](#)

**Product images:**

Staining of normal human peripheral blood cells with 0.5 ug of Mouse IgG1 Isotype Control Purified (open histogram) or 0.5 ug of Anti-Human CD33 Purified (filled histogram) followed by Anti-Mouse IgG FITC and granulocyte (right) gates were used for analysis.