

Product datasheet for **TA320247**

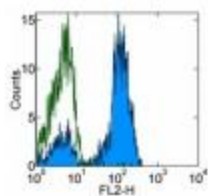
CD2 Mouse Monoclonal Antibody [Clone ID: RPA-2.10]

Product data:

Product Type:	Primary Antibodies
Clone Name:	RPA-2.10
Applications:	FC
Recommended Dilution:	Flow, IHC, Functional Assay, WB
Reactivity:	Baboon, Chimpanzee, Human, Pig, Rhesus Monkey
Host:	Mouse
Clonality:	Monoclonal
Formulation:	Aqueous buffer, 0.09% sodium azide, may contain carrier protein/stabilizer
Concentration:	lot specific
Purification:	Affinity purified
Conjugation:	Unconjugated
Storage:	Store at -20°C as received.
Stability:	Stable for 12 months from date of receipt.
Gene Name:	CD2 molecule
Database Link:	NP_001758 Entrez Gene 914 Human P06729
Background:	The RPA-2.10 monoclonal antibody reacts with human CD2, a 50 kDa cell surface receptor expressed by a majority of thymocytes, all mature T cells and subset of NK cells. CD2 is a ligand for CD58 in the human and is involved in adhesion and activation of T cells. RPA-2.10 blocks mixed lymphocyte reaction. RPA-2.10 crossreacts to non-human primates and pigs.
Synonyms:	LFA-2; SRBC; T11
Protein Families:	Druggable Genome, Transmembrane
Protein Pathways:	Cell adhesion molecules (CAMs), Hematopoietic cell lineage



[View online »](#)

Product images:

Staining of normal human peripheral blood cells with 0.25 ug of Mouse IgG1 kappa Isotype Control Purified (open histogram) or 0.25 ug of Anti-Human CD2 Purified (filled histogram) followed by Anti-Mouse IgG PE. Cells in the lymphocyte gate were used for analysis.