

## Product datasheet for **TA320239**

### RP105 (CD180) Mouse Monoclonal Antibody [Clone ID: MHR73-11]

#### Product data:

Product Type:	Primary Antibodies
Clone Name:	MHR73-11
Applications:	FC
Recommended Dilution:	Flow, IHC, Functional Assay, IP
Reactivity:	Human
Host:	Mouse
Clonality:	Monoclonal
Formulation:	Aqueous buffer, 0.09% sodium azide, may contain carrier protein/stabilizer
Concentration:	lot specific
Purification:	Affinity purified
Conjugation:	Unconjugated
Storage:	Store at -20°C as received.
Stability:	Stable for 12 months from date of receipt.
Gene Name:	CD180 molecule
Database Link:	<a href="#">NP_005573</a> <a href="#">Entrez Gene 4064 Human</a> <a href="#">Q99467</a>



[View online »](#)

**Background:**

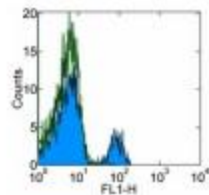
The MHR73-11 monoclonal antibody reacts with human CD180 (RP105). This 105 kDa type I transmembrane molecule is a member of the TLR family of proteins characterized by an extracellular domain with leucine-rich repeats and a cytoplasmic domain with homology to the type I IL-1 receptor. RP105 physically associates with another molecule called MD-1 and is expressed on B, monocytes/macrophages, and dendritic cells. Histological studies show that RP105 is expressed mainly on mature B cells in mantle zones, while germinal center cells are either dull or negative. The RP105/MD-1 complex in concert with TLR4 mediates B cell recognition and signaling of LPS. MHR73-11 activates B cells, leading to increases in cell size, expression of the costimulatory molecule CD80, and DNA synthesis. Moreover, ligation of RP105 protects B cells from irradiation- or dexamethasone-induced apoptosis. Thus, RP105 is a signal transduction molecule and plays a role in regulation of B cell growth and death. A significant proportion of circulating B cells in SLE patients is RP105 negative. Loss of RP105 is associated with B cell activation and increased disease activity in SLE patients.

**Synonyms:**

LY64; Ly78; RP105

**Protein Families:**

Druggable Genome, Transmembrane

**Product images:**

Staining of normal human peripheral blood cells with 1 ug of Mouse IgG1 kappa Isotype Control Purified (open histogram) or 1 ug of Anti-Human CD180 (RP105) Purified (filled histogram) followed by Anti-Mouse IgG FITC. Cells in the lymphocyte gate were used for analysis.