

## Product datasheet for **TA320225**

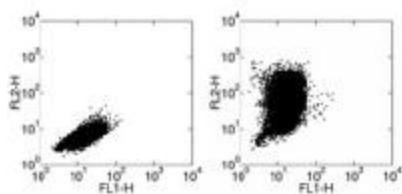
### **MCP1 (CCL2) Hamster Monoclonal Antibody [Clone ID: 2H5]**

#### **Product data:**

<b>Product Type:</b>	Primary Antibodies
<b>Clone Name:</b>	2H5
<b>Applications:</b>	FC
<b>Recommended Dilution:</b>	Flow, ELISA, IHC, WB
<b>Reactivity:</b>	Human, Mouse, Rat
<b>Host:</b>	Hamster
<b>Clonality:</b>	Monoclonal
<b>Formulation:</b>	Aqueous buffer, 0.09% sodium azide, may contain carrier protein/stabilizer
<b>Concentration:</b>	lot specific
<b>Purification:</b>	Affinity purified
<b>Conjugation:</b>	Unconjugated
<b>Storage:</b>	Store at -20°C as received.
<b>Stability:</b>	Stable for 12 months from date of receipt.
<b>Gene Name:</b>	C-C motif chemokine ligand 2
<b>Database Link:</b>	<a href="#">NP_002973</a> <a href="#">Entrez Gene 20296 Mouse</a> <a href="#">Entrez Gene 24770 Rat</a> <a href="#">Entrez Gene 6347 Human</a> <a href="#">P13500</a>
<b>Background:</b>	The 2H5 monoclonal antibody reacts with mouse, rat, and human monocyte chemoattractant protein-1 (MCP-1), also known as CCL2 and MCAF.
<b>Synonyms:</b>	GDGF-2; HC11; HSMCR30; MCAF; MCP-1; MCP1; SCYA2; SMC-CF
<b>Protein Families:</b>	Druggable Genome, Secreted Protein
<b>Protein Pathways:</b>	Chemokine signaling pathway, Cytokine-cytokine receptor interaction, NOD-like receptor signaling pathway



[View online »](#)

**Product images:**

Staining of mouse thioglycolate-induced peritoneal exudate cells (PECs) stimulated with LPS in the presence of Brefeldin A for 24 hours with Anti-Mouse F4/80 Antigen FITC and intracellularly stained with Rat IgG2a K Isotype Control (left) or with Anti-CCL2 (MCP-1) PE (right).