

Product datasheet for **TA320221**

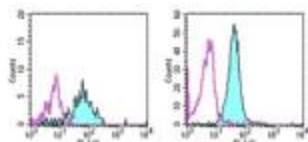
CD13 (ANPEP) Mouse Monoclonal Antibody [Clone ID: WM-15 (WM15)]

Product data:

Product Type:	Primary Antibodies
Clone Name:	WM-15 (WM15)
Applications:	FC
Recommended Dilution:	Flow, IHC
Reactivity:	Human
Host:	Mouse
Clonality:	Monoclonal
Formulation:	Aqueous buffer, 0.09% sodium azide, may contain carrier protein/stabilizer
Concentration:	lot specific
Purification:	Affinity purified
Conjugation:	Unconjugated
Storage:	Store at -20°C as received.
Stability:	Stable for 12 months from date of receipt.
Gene Name:	alanyl aminopeptidase, membrane
Database Link:	NP_001141 Entrez Gene 290 Human P15144
Background:	The WM-15 monoclonal antibody reacts with human CD13, also known as aminopeptidase N. CD13 is a transmembrane ectoenzyme occurring on monocytes and granulocytes but not lymphocytes in blood. It is also reportedly on a wide variety of cells and in a wide variety of tissues, including endothelial cells, epithelial cells, fibroblasts, kidney proximal tubules, intestine, and placenta. CD13 is reported to have many different functions including degradation of enkephalins and endorphins, terminal degradation of peptides, amino acid scavenging, antigen processing, and adhesion and migration of cells.
Synonyms:	APN; CD13; GP150; LAP1; P150; PEPN
Protein Families:	Druggable Genome, ES Cell Differentiation/IPS, Protease, Transmembrane
Protein Pathways:	Glutathione metabolism, Hematopoietic cell lineage, Metabolic pathways, Renin-angiotensin system



[View online »](#)

Product images:

Staining of normal human peripheral blood cells with 0.5 ug of Mouse IgG1 Isotype Control Purified (open histogram) or 0.5 ug of Anti-Human CD13 Purified (filled histogram) followed by Anti-Mouse IgG FITC and granulocyte (right) gates were used for analysis.