

Product datasheet for **TA320218**

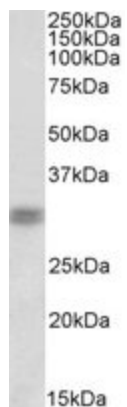
Crx Goat Polyclonal Antibody

Product data:

Product Type:	Primary Antibodies
Applications:	WB
Recommended Dilution:	WB: 1-3ug/ml, ELISA: 1:128,000
Reactivity:	Rat (Expected from sequence similarity: Human, Mouse, Pig, Cow)
Host:	Goat
Isotype:	IgG
Clonality:	Polyclonal
Immunogen:	Peptide with sequence C-DPLDYKDQSAWK, from the internal region (near C Terminus) of the protein sequence according to NP_000545.1
Formulation:	Supplied at 0.5 mg/ml in Tris saline, 0.02% sodium azide, pH7.3 with 0.5% bovine serum albumin
Concentration:	lot specific
Purification:	Purified from goat serum by ammonium sulphate precipitation followed by antigen affinity chromatography using the immunizing peptide
Conjugation:	Unconjugated
Storage:	Store at -20°C as received.
Stability:	Stable for 12 months from date of receipt.
Predicted Protein Size:	32.3 kDa
Gene Name:	cone-rod homeobox
Database Link:	NP_068627 Entrez Gene 1406 Human Entrez Gene 12951 Mouse Entrez Gene 60446 Rat
Background:	an OTX-like homeobox protein; may play an important role in the retina [RGD, Feb 2006].
Synonyms:	CORD2; CRD; LCA7; OTX3



[View online »](#)

Product images:

Anti-CRX (1ug/ml) staining of Rat Retina lysate (35ug protein in RIPA buffer). Primary incubation was 1 hour. Detected by chemiluminescence.