

## Product datasheet for **TA320216**

### CREB1 Goat Polyclonal Antibody

#### Product data:

Product Type:	Primary Antibodies
Applications:	WB
Recommended Dilution:	WB: 0.1-0.3ug/ml, ELISA: 1:128,000
Reactivity:	Human, Mouse (Expected from sequence similarity: Dog, Pig, Cow)
Host:	Goat
Isotype:	IgG
Clonality:	Polyclonal
Immunogen:	Peptide with sequence C-DSQESVDSVTDSQK, from the internal region of the protein sequence according to NP_004370.1; NP_604391.1
Formulation:	Supplied at 0.5 mg/ml in Tris saline, 0.02% sodium azide, pH7.3 with 0.5% bovine serum albumin
Concentration:	lot specific
Purification:	Purified from goat serum by ammonium sulphate precipitation followed by antigen affinity chromatography using the immunizing peptide
Conjugation:	Unconjugated
Storage:	Store at -20°C as received.
Stability:	Stable for 12 months from date of receipt.
Predicted Protein Size:	36.7 kDa
Gene Name:	cAMP responsive element binding protein 1
Database Link:	<a href="#">NP_004370</a> <a href="#">Entrez Gene 12912 Mouse</a> <a href="#">Entrez Gene 607922 Dog</a> <a href="#">Entrez Gene 1385 Human</a> <a href="#">P16220</a>
Background:	This gene encodes a transcription factor that is a member of the leucine zipper family of DNA binding proteins. This protein binds as a homodimer to the cAMP-responsive element, an octameric palindrome. The protein is phosphorylated by several protein kinases, and induces transcription of genes in response to hormonal stimulation of the cAMP pathway. Alternate splicing of this gene results in two transcript variants encoding different isoforms. [provided by RefSeq, Jul 2008]



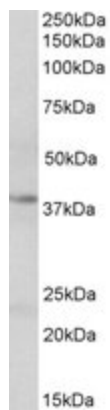
[View online »](#)

Synonyms: CREB

Protein Families: Druggable Genome, Transcription Factors

Protein Pathways: Antigen processing and presentation, Huntington's disease, Melanogenesis, Prostate cancer

### Product images:



TA320216 (0.1ug/ml) staining of Jurkat (A) and NIH3T3 (B) nuclear lysates (35ug protein in RIPA buffer). Primary incubation was 1 hour. Detected by chemiluminescence.