

Product datasheet for **TA320211**

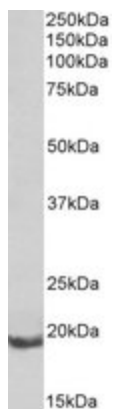
Bcl2a1a Goat Polyclonal Antibody

Product data:

Product Type:	Primary Antibodies
Applications:	WB
Recommended Dilution:	WB: 0.1-0.3ug/ml, ELISA: 1:128,000
Reactivity:	Rat
Host:	Goat
Isotype:	IgG
Clonality:	Polyclonal
Immunogen:	Peptide with sequence C-QKEVEKNLKPYLDD, from the internal region of the protein sequence according to NP_596907.1
Formulation:	Supplied at 0.5 mg/ml in Tris saline, 0.02% sodium azide, pH7.3 with 0.5% bovine serum albumin
Concentration:	lot specific
Purification:	Purified from goat serum by ammonium sulphate precipitation followed by antigen affinity chromatography using the immunizing peptide
Conjugation:	Unconjugated
Storage:	Store at -20°C as received.
Stability:	Stable for 12 months from date of receipt.
Predicted Protein Size:	20.4 kDa
Gene Name:	B cell leukemia/lymphoma 2 related protein A1a
Database Link:	NP_033872 Entrez Gene 12044 Mouse Q07440
Synonyms:	A1; BB218357; Bcl2a1; Bfl-1; Hbpa1



[View online »](#)

Product images:

Anti-Bcl2a1a (0.1 ug/ml) staining of Rat Spleen lysate (35ug protein in RIPA buffer). Primary incubation was 1 hour. Detected by chemiluminescence.