

Product datasheet for **TA320209**

BCAR1 Goat Polyclonal Antibody

Product data:

Product Type:	Primary Antibodies
Applications:	WB
Recommended Dilution:	WB: 1-3ug/ml, ELISA: 1:128,000
Reactivity:	Human (Expected from sequence similarity: Mouse, Rat, Dog)
Host:	Goat
Isotype:	IgG
Clonality:	Polyclonal
Immunogen:	Peptide with sequence C-KQTSTFSKQTPHH, from the internal region of the protein sequence according to NP_001164185.1; NP_001164186.1; NP_001164187.1; NP_001164188.1; NP_001164189.1; NP_055382.2; NP_001164190.1; NP_001164191.1; NP_001164192.1
Formulation:	Supplied at 0.5 mg/ml in Tris saline, 0.02% sodium azide, pH7.3 with 0.5% bovine serum albumin
Concentration:	lot specific
Purification:	Purified from goat serum by ammonium sulphate precipitation followed by antigen affinity chromatography using the immunizing peptide
Conjugation:	Unconjugated
Storage:	Store at -20°C as received.
Stability:	Stable for 12 months from date of receipt.
Predicted Protein Size:	97.9 kDa
Gene Name:	BCAR1, Cas family scaffolding protein
Database Link:	NP_055382 Entrez Gene 12927 Mouse Entrez Gene 25414 Rat Entrez Gene 479648 Dog Entrez Gene 9564 Human P56945
Background:	BCAR1, or CAS, is an Src (MIM 190090) family kinase substrate involved in various cellular events, including migration, survival, transformation, and invasion (Sawada et al., 2006 [PubMed 17129785]). [supplied by OMIM]
Synonyms:	CAS; CAS1; CASS1; CRKAS; P130Cas

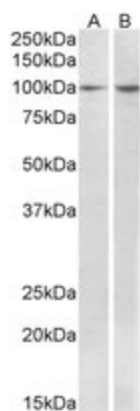


[View online »](#)

Protein Families: Druggable Genome

Protein Pathways: Chemokine signaling pathway, Focal adhesion, Leukocyte transendothelial migration, Regulation of actin cytoskeleton

Product images:



Anti-BCAR1 (1ug/ml) staining of MCF7 (A) and Human Breast cancer (B) lysates (35ug protein in RIPA buffer). Primary incubation was 1 hour. Detected by chemiluminescence.